



22 Sir Thomas Street, Liverpool, Merseyside L1 6BB

£895 PCM

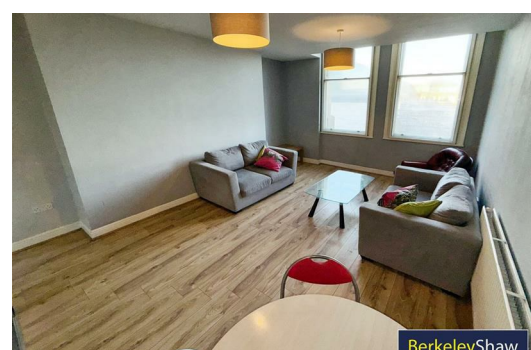
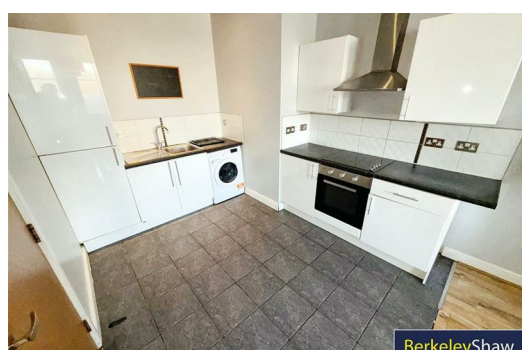
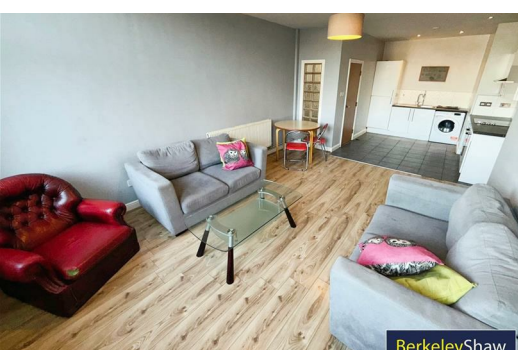
We present to you this stunning, neutrally decorated TWO BEDROOM apartment TO LET. The property is located in a highly sought-after location with excellent public transport links and local amenities in close proximity, providing an ideal blend of convenience and comfort.

The flat boasts a spacious reception room, perfect for relaxing or entertaining guests. The room exudes a sense of comfort and warmth, accentuated by the neutral decor that allows you to add your personal touches and make this space truly your own. Natural light floods the room, further enhancing the welcoming ambiance.

This property benefits from two well-proportioned bedrooms, offering ample space for relaxation and storage. Each room is a haven of tranquillity, perfect for unwinding after a long day. The flat also features two bathrooms, each meticulously designed to offer a combination of style and functionality.

The flat is equipped with a modern kitchen that will inspire your inner chef. The kitchen comes complete with ample storage and workspace, ensuring you have everything you need to create your culinary delights.

This exceptional property, with its prime location and well-presented interior, is perfect for those seeking a comfortable and convenient living space. The flat's layout and features offer a unique blend of style and functionality, making it an ideal choice for modern living. Don't miss out on this remarkable opportunity, contact us today to arrange a viewing.



Hallway

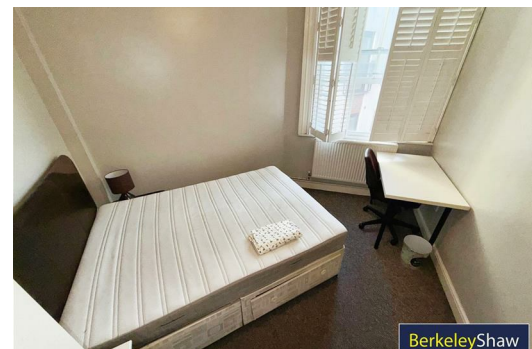
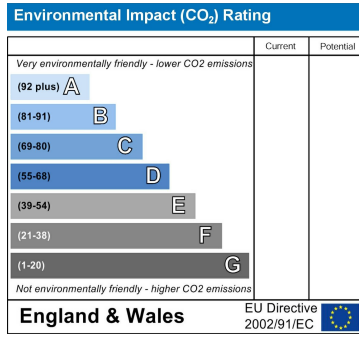
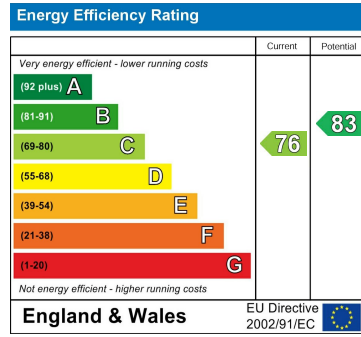
Open Plan Lounge Kitchen

Bedroom 1

Ensuite Shower Room

Bedroom 2

Bathroom



Berkeley Shaw Estate Agents Limited.
Company No. 0784754

Berkeley Shaw Real Estate Limited.
Company No. 05206927

