



644 Longmoor Lane, Liverpool, Merseyside L10 9LA

£800 PCM

Berkeley Shaw are pleased to offer a first floor THREE BEDROOM Apartment which offers a private entrance with stairs to the apartment. It has 3 double bedrooms, large lounge, fitted kitchen and a bathroom. The property benefits from double glazing and gas central heating.

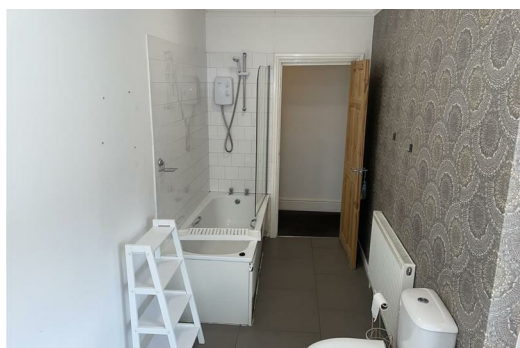
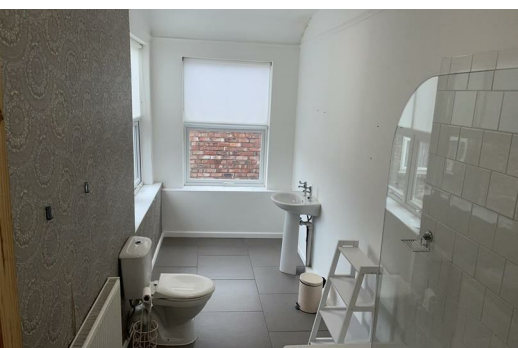
The property is situated near all local amenities and great transport links.

Viewing is highly recommended

Council Tax band: A

Deposit: £800

Rental Duration: minimum 12 months



KITCHEN

Fitted kitchen, oven and hob, fridge freezer, breakfast bar, stools, double glazed window and tiled flooring.

BATHROOM

Bath, Shower, toilet, radiator, double glazed window and tiled flooring.

BEDROOM 1

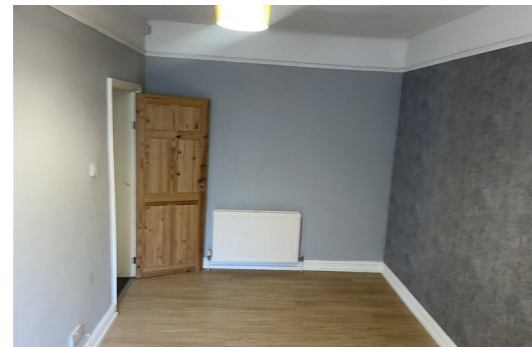
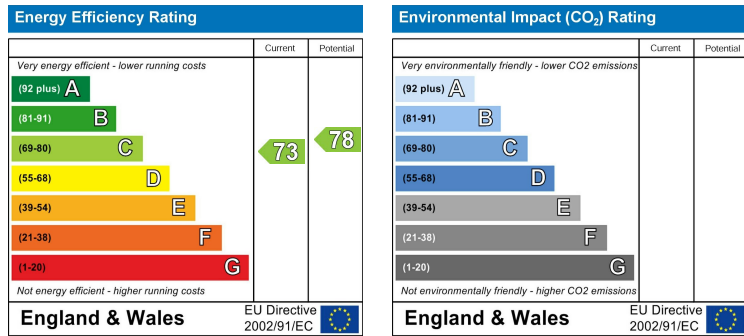
Laminate flooring, double glazed window and laminate flooring.

BEDROOM 2

Laminate flooring, double glazed window and radiator.

BEDROOM 3

Double wardrobe, chest of drawers, radiator and double glazed window.



Berkeley Shaw Estate Agents Limited.
Company No. 0784754

Berkeley Shaw Real Estate Limited.
Company No. 05206927

