



3 Park Terrace, Liverpool, Merseyside L22 3XB

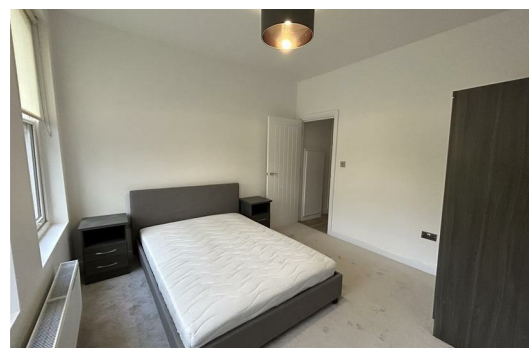
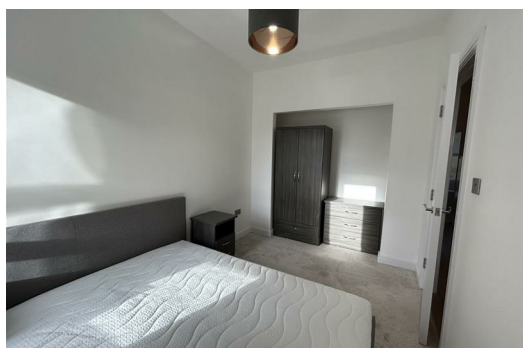
£1,000 PCM

Berkeley Shaw our please to offer TO LET NEW FURNISHED PRESTIGE APARTMENTS in Park Terrace. This is a brand new conversion of a beautiful character property in this highly sought after area of Waterloo. This Victorian Terrace consists of two and three bed apartments, benefitting from high ceilings and large windows flooding the rooms with natural light.

This Middle Floor two bed apartment is offered fully furnished with high quality furniture, the kitchen also includes integrated appliances and a washer/dryer.

Early viewing is recommended to avoid missing out on these beautiful apartments.

Deposit: £1096.00
Council Tax Band: TBC
Minimum Tenancy: 6 months



Hallway

Open Plan Lounge / Kitchen

Double glazed windows, radiators, laminate flooring, fitted kitchen comprises of a range of base and wall units with integrated appliances including fridge/ freezer, cooker and hob, freestanding dishwasher and washer/dryer. Furnishings include dining table and chairs, sofas, coffee tables

Bedroom 1

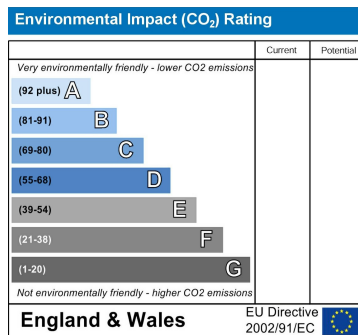
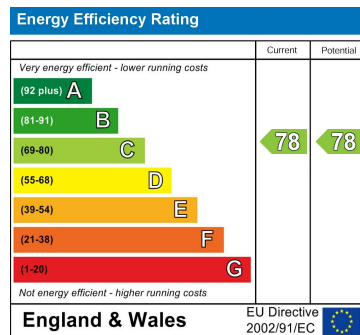
Double glazed window, radiator, carpet, Furnishings include Double bed headboard and mattress, bedside cabinets, chest of drawers, wardrobe

Bedroom 2

Double glazed window, radiator, carpet, Furnishings include Double bed headboard and mattress, bedside cabinets, chest of drawers, wardrobe

Bathroom

Fully tiled, panelled bath with combination shower over and screen, vanity sink unit and low level w.c.



Berkeley Shaw Estate Agents Limited.
Company No. 0784754

Berkeley Shaw Real Estate Limited.
Company No. 05206927

