



2 Park Terrace, Waterloo, Liverpool L22 3XB

£999 PCM

Berkeley Shaw our please to offer TO LET NEW FIRST FLOOR FURNISHED PRESTIGE APARTMENT in Park Terrace. This is a brand new conversion of a beautiful character property in this highly sought after area of Waterloo. This Victorian Terrace consists of two and three bed apartments, benefitting from high ceilings and large windows flooding the rooms with natural light.

This Middle Floor two bed apartment is offered fully furnished with high quality furniture, the kitchen also includes integrated appliances.

Early viewing is recommended to avoid missing out on these beautiful apartments.

Deposit: £1152
Council Tax Band: TBC
Minimum Tenancy: 6 months



Hallway

Laminate flooring, radiator

Open Plan Lounge Kitchen Diner

Double glazed windows, laminate flooring, radiators, kitchen comprised of a range of fitted base and wall units with single drainer sink with mixer taps, integrated appliances include Fridge/ Freezer, dishwasher, washing machine. Furnishings include 2 x sofa, coffee table, tv stand and dining table and chairs

Bedroom 1

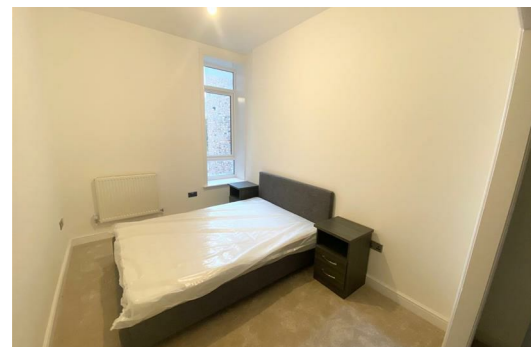
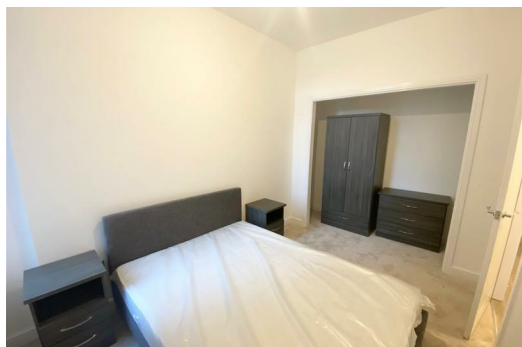
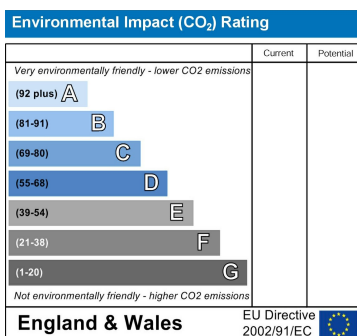
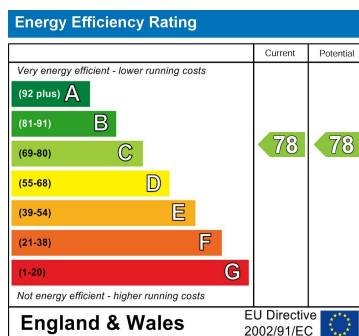
Double glazed window, carpet, radiator, furnishings includes double bed and mattress, wardrobe, chest of drawers and 2 x bedside cabinets

Bedroom 2

Double glazed window, carpet, radiator, furnishings includes double bed and mattress, wardrobe, chest of drawers and 2 x bedside cabinets

Bathroom

Fully tiled, panelled bath with combination shower over and screen, vanity sink unit and low level w.c.



Berkeley Shaw Estate Agents Limited.
Company No. 0784754

Berkeley Shaw Real Estate Limited.
Company No. 05206927

