



20 Hastings Road, Liverpool, L22 6QS

£900 PCM

Berkeley Shaw are pleased to offer TO LET 2 BEDROOM UNFURNISHED MID TERRACED HOUSE

This property has well proportioned rooms and has been finished to a high standard. The property briefly comprises of hallway, lounge, dining / kitchen with fridge /freezer, dishwasher, hob and electric oven, to first floor, landing, 2 bedrooms, bathroom. There is on road parking, front and rear garden.

Viewing is highly recommended call 01519246000

Council Tax Band: B

Deposit: £900

Minimum Tenancy Term: 12 months



Font Exterior

Walled boundary with path leading to front door

Hallway

Entrance door, staircase to first floor

Front Reception

UPVC Double glazed window, laminate flooring, radiator and fire place with wood burner

Kitchen Diner

UPVC Double glazed window and exterior door, part tile floor, part laminate, kitchen comprises of a range of fitted base and wall units with electric oven and gas hob, extractor hood, dishwasher, american style fridge freezer

Landing

Carpeted

Bedroom 1

UPVC Double glazed window, carpet, radiator, two fitted wardrobes

Bedroom 2

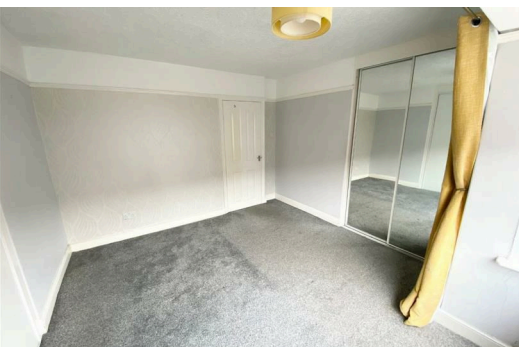
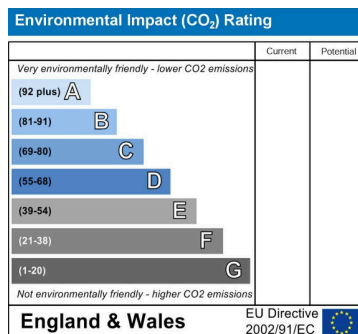
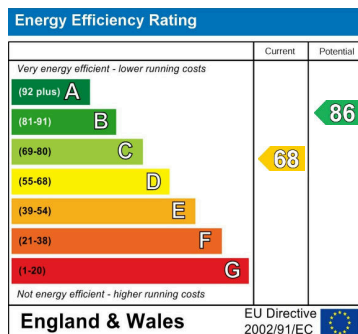
UPVC Double glazed windows, carpet, blinds Radiator, Boiler

Bathroom

UPVC Double glazed window, fully tiled walls and floors, three piece bathroom suite comprising of panelled bath with shower over, sink, low level w.c. storage cupboard and ladder towel rail

Rear Exterior

Astro turf area, paved patio



Berkeley Shaw Estate Agents Limited.
Company No. 0784754

Berkeley Shaw Real Estate Limited.
Company No. 05206927

