



30 Carrfield Avenue, Liverpool, L23 9SS

£1,100 PCM

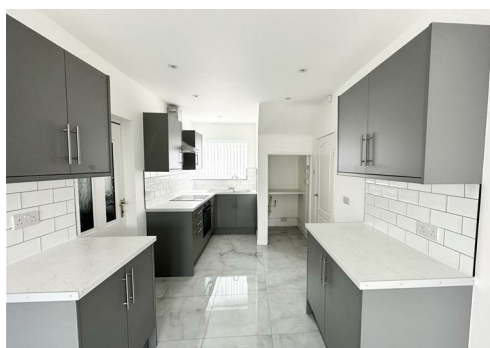
BERKELEY SHAW are delighted to offer TO LET this THREE BEDROOM family home, located in this ever popular residential area, close to local shops, shops and transport links. This fully refurbished home offers light and airy accommodation throughout. Externally, the property benefits from front and rear garden. Internally, the property consists of a Entrance Hallway, Front Lounge, Kitchen Dining Room, Landing, 3 Bedrooms and a bathroom, Brick Built Out Houses to side.

Property benefits from double glazing and gas central heating

Council Tax band: B

Deposit: £1,200

Rental Duration: minimum 12 months



Front Exterior

Lawn and paved pathway

Hallway

Double glazed entrance door and window, carpet staircase to first floor

Lounge

Double glazed window , radiator and carpet

Kitchen Diner

Double glazed window and french doors to rear, fully tiled floor and tiled around surfaces, kitchen comprises of a range of fitted base and wall units, single drainer sink with mixer tap, integrated electric oven , hob and extractor hood, plumbing for washing machine, blinds

Landing

Carpet

Bedroom 1

Double glazed window, carpet and radiator

Bedroom 2

Double glazed window, carpet and radiator

Bedroom 3

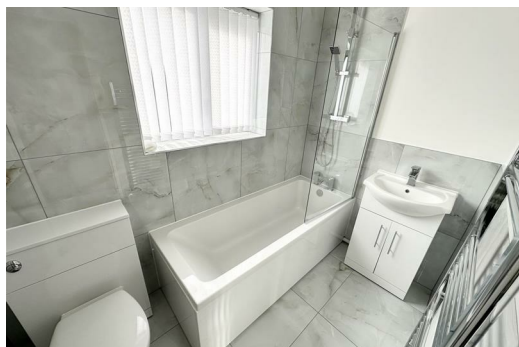
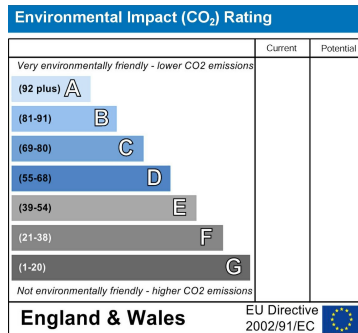
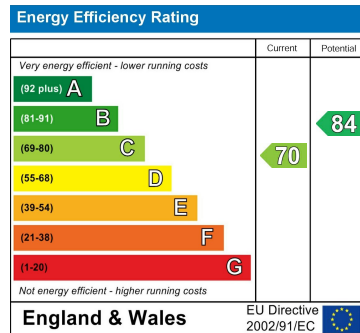
Double glazed window, carpet and radiator

Bathroom

double glazed window, fully tiled walls and flooring, bathroom comprised of bath with shower over, low level w.c. sink, ladder towel rail

Rear Exterior

paved and lawned area



Berkeley Shaw Estate Agents Limited.
Company No. 0784754

Berkeley Shaw Real Estate Limited.
Company No. 05206927

