



## 10 Ismay Road, Liverpool, Merseyside L21 8LY

£775 PCM

Berkeley Shaw are pleased to offer for TO LET this good sized 2 BEDROOM REFURBISHED MID TERRACE PROPERTY close to local amenities and local schools, The property comprises of: lounge, dining room, modern kitchen, two double bedrooms and bathroom. Gas central heating, double glazed windows and yard to rear.

Property is Available to view please call 0151 924 6000

Council Tax band: A

Deposit: £800

Rental Duration: minimum 12 months



**Lounge**  
Entrance door, double glazed window, carpet and radiator

**Dining Room**  
Double glazed window, staircase to first floor, radiator, carpet

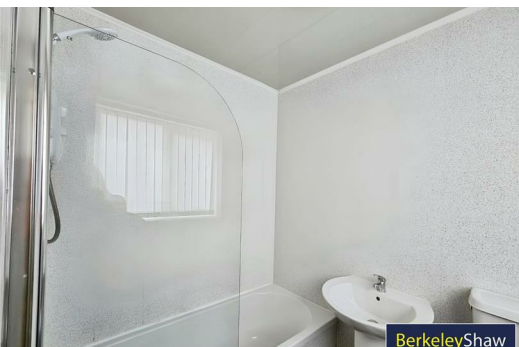
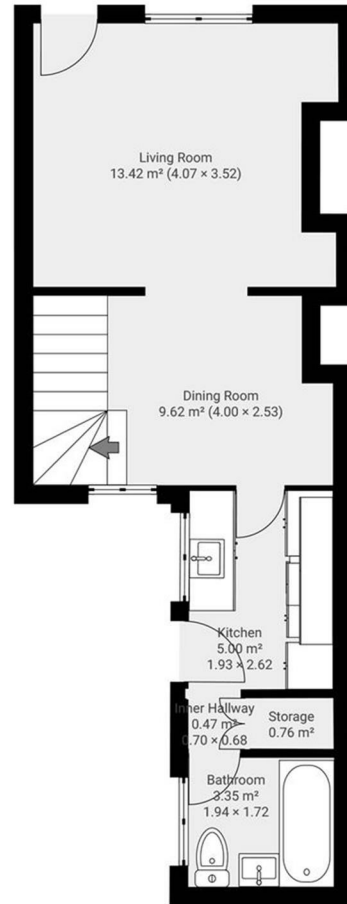
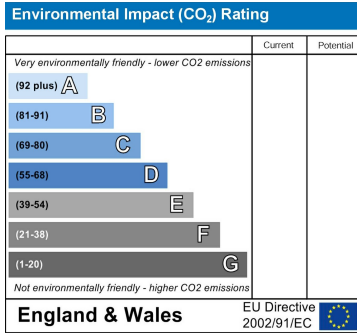
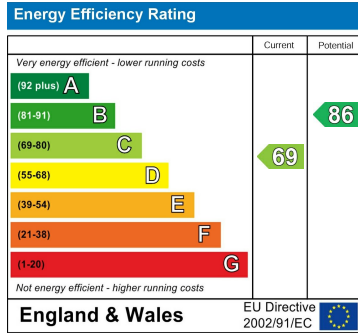
**Kitchen**  
Double glazed window and exterior pvc door, walk in storage cupboard housing boiler, kitchen comprises of a range of fitted base and wall units, stainless steel sink with mixer taps, plumbing for washing machine, electric oven, hob and extractor hood

**Bathroom**  
Double glazed window, radiator, pvc ceiling and walls bath with shower over and shower screen, sink, low level w.c.

**Bedroom 1**  
Double glazed window, radiator, carpet

**Bedroom 2**  
Double glazed window, radiator, carpet

**Yard**  
concrete yard



BerkeleyShaw



BerkeleyShaw



BerkeleyShaw



Berkeley Shaw Estate Agents Limited.  
Company No. 0784754

Berkeley Shaw Real Estate Limited.  
Company No. 05206927

