



## Flat 3, 42a Scarisbrick New Road, Southport, PR8 6QE

£925 PCM

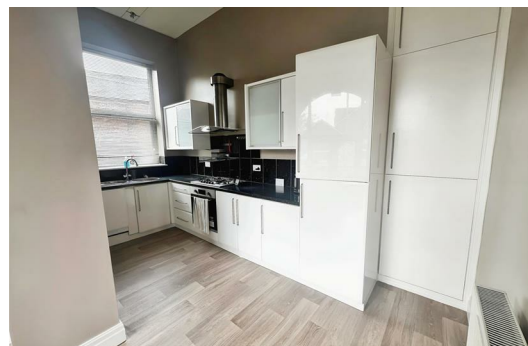
Nestled on Scarisbrick New Road in the charming town of Southport, this splendid ground floor apartment offers a delightful blend of comfort and convenience. With two spacious bedrooms one with en-suite this property is ideal for individuals or a couple seeking a modern living space.

Upon entering, you are welcomed into a generous high ceiling reception room that provides a warm and inviting atmosphere, perfect for relaxation or entertaining guests. The layout is thoughtfully designed to maximize space and light, creating a bright and airy environment throughout.

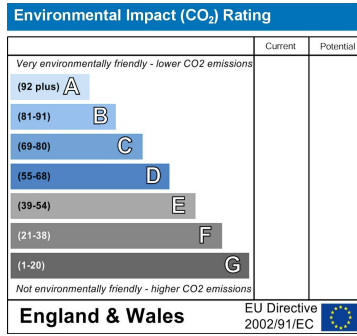
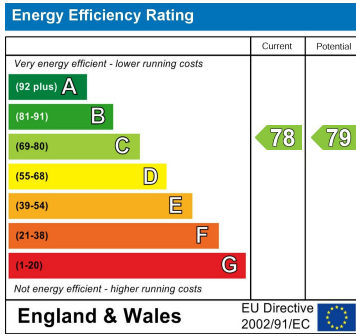
One of the standout features of this apartment is the private balcony patio area, which offers a serene outdoor space to enjoy your morning coffee or unwind after a long day. This exclusive area is perfect for those who appreciate a touch of nature without leaving the comfort of home.

The apartment also includes parking for one vehicle, adding to the convenience of living in this desirable location. Southport is known for its beautiful coastline, vibrant community, and an array of local amenities, making it an excellent choice for those looking to enjoy a balanced lifestyle.

In summary, this large two-bedroom apartment on Scarisbrick New Road presents a fantastic opportunity for anyone seeking a modern and comfortable home in Southport. With its appealing features and prime location, it is sure to attract interest. Viewings highly recommended to appreciate this true beauty of a rental property.



- Hallway
- Family Bathroom
- Master Bedroom
- En-suite
- Bedroom two
- Lounge
- Dining room
- Kitchen
- Private patio



Berkeley Shaw Estate Agents Limited.  
Company No. 0784754

Berkeley Shaw Real Estate Limited.  
Company No. 05206927

