



BerkeleyShaw

49 Lathom Drive, Liverpool, L31 9DA

£1,100 PCM

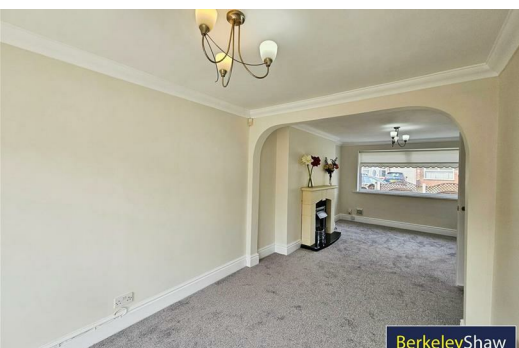
Berkeley Shaw are delighted to introduce for rent this delightful three bedroom semi detached family home. Situated in a popular, residential location of Maghull. Close to local shops, schools, transport links and amenities.

The property briefly comprises of entrance hall, lounge, open plan to dining room and kitchen. To the first floor there are three bedrooms and a bathroom. The property benefits from gas central heating and double glazing, with off road parking, and gardens to the front and rear. Offered with no chain, viewing is highly recommended.

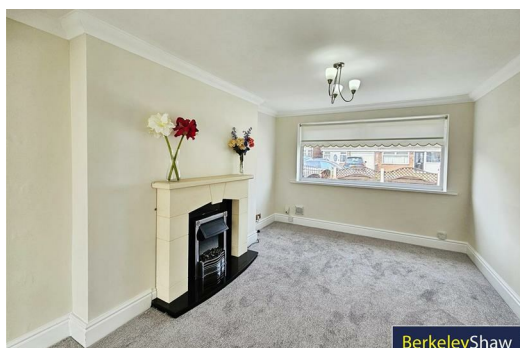
Deposit - £1269.23

EPC D

Council tax band- C




BerkeleyShaw




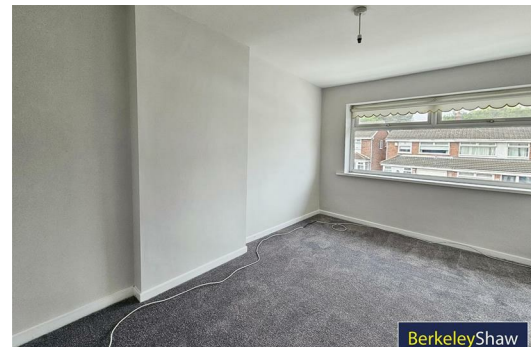
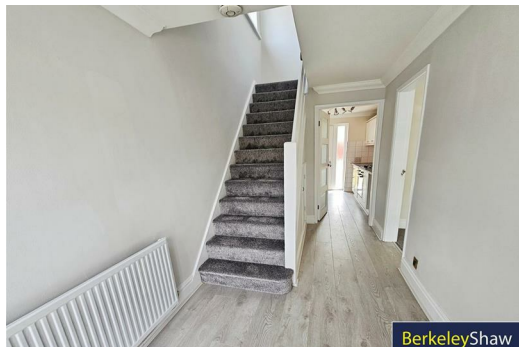
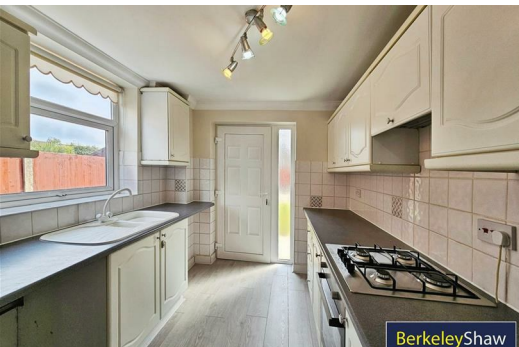
BerkeleyShaw



BerkeleyShaw

Energy Efficiency Rating		
	Current	Potential
Very energy efficient - lower running costs		
(92 plus) A		
(81-91) B		
(69-80) C		
(55-68) D		
(39-54) E		
(21-38) F		
(1-20) G		
Not energy efficient - higher running costs		
	67	83
EU Directive 2002/91/EC 		

Environmental Impact (CO ₂) Rating		
	Current	Potential
Very environmentally friendly - lower CO ₂ emissions		
(92 plus) A		
(81-91) B		
(69-80) C		
(55-68) D		
(39-54) E		
(21-38) F		
(1-20) G		
Not environmentally friendly - higher CO ₂ emissions		
EU Directive 2002/91/EC 		



Berkeley Shaw Estate Agents Limited.
Company No. 0784754

Berkeley Shaw Real Estate Limited.
Company No. 05206927

