



Apartment 287 Ellerman Road, Liverpool, L3 4FE

£950 Per Month

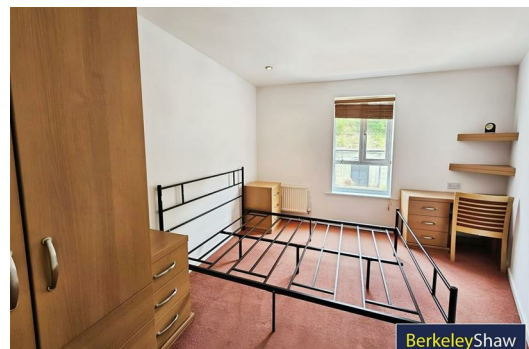
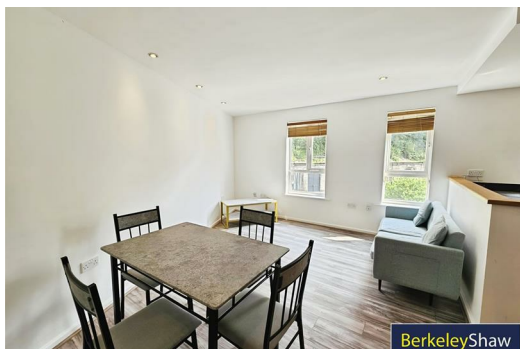
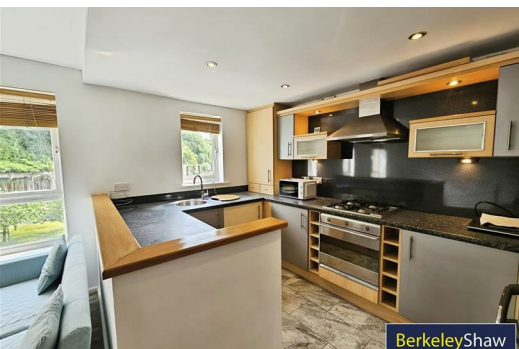
Berkeley Shaw are delighted to offer an apartment that ticks all the boxes, the apartment has been beautifully refurbished and is situated within the City Quay Development set in the heart of Liverpool.

This property is a two Bedroom FURNISHED second floor apartment complete with allocated parking.

The property comprises of hallway, open plan lounge/kitchen with appliances, two double bedrooms, modern bathroom with gas central heating. This apartment is fully double glazed.

Contact our office to arrange a viewing.

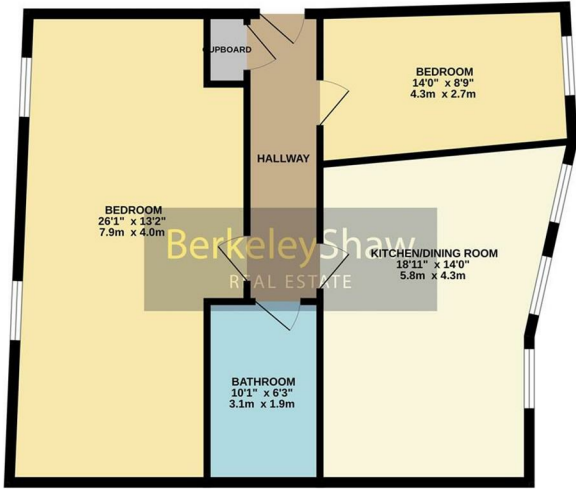
EPC - C
Minimum term- 12 months
Deposit- £1096.15



Energy Efficiency Rating		Current	Potential
Very energy efficient - lower running costs			
(92 plus) A			
(81-91) B			
(69-80) C			
(55-68) D			
(39-54) E			
(21-38) F			
(1-20) G			
Not energy efficient - higher running costs			
England & Wales		EU Directive 2002/91/EC	

Environmental Impact (CO ₂) Rating		Current	Potential
Very environmentally friendly - lower CO ₂ emissions			
(92 plus) A			
(81-91) B			
(69-80) C			
(55-68) D			
(39-54) E			
(21-38) F			
(1-20) G			
Not environmentally friendly - higher CO ₂ emissions			
England & Wales		EU Directive 2002/91/EC	

GROUND FLOOR
770 sq.ft. (71.5 sq.m.) approx.



TOTAL FLOOR AREA: 770 sq.ft. (71.5 sq.m.) approx.
While every attempt has been made to ensure the accuracy of the floorplan contained here, measurements of floors, walls, rooms, etc. may vary slightly from those shown and responsibility is borne by the user. Prospective purchasers should verify the actual measurements and details of the property before purchase. The services, systems and appliances shown here are not guaranteed and no guarantee is made as to their operability or efficiency for the future.
Marked with BERKELEYSHAW 12/2025



Berkeley Shaw Estate Agents Limited.
Company No. 0784754

Berkeley Shaw Real Estate Limited.
Company No. 05206927

