



## 3 Cedar Grove, Liverpool, Merseyside L22 2AE

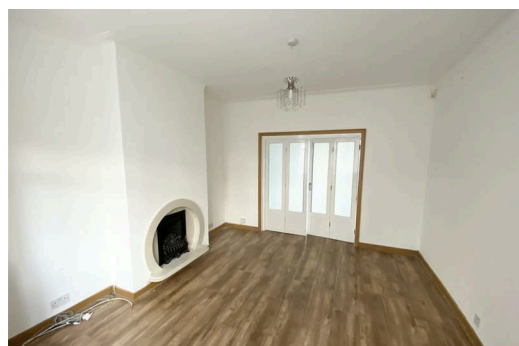
Offers Over £280,000

Spacious 3-Bedroom Semi-Detached Home in the Heart of Waterloo – No Onward Chain

Located in the vibrant heart of Waterloo, this beautifully presented three-bedroom semi-detached home offers the perfect blend of comfort, convenience, and lifestyle. With no onward chain, it's a ready-to-move-in opportunity ideal for a wide range of buyers.

Whether you're a growing family looking to benefit from excellent local schools, a commuter needing easy access to public transport, or simply searching for a turn-key property in a sought-after area, this home ticks all the boxes.

This property is a must-see to truly appreciate all it has to offer. Don't miss out—book your viewing today and secure your next home in one of Waterloo's most desirable locations.



## Front Exterior

Paved Driveway

## Hallway

UPVC Double Glazed door, double glazed window, radiator, laminate flooring walk in understairs storage cupboard.

## Down Stairs W.C

UPVC Double glazed window, low level w.c. wash hand basin laminate flooring

## Cloaks Cupboard

UPVC Double glazed window, laminate flooring, coat hooks to walls

## Lounge

UPVC Double glazed bay window, laminate flooring, radiator, fireplace

## Kitchen Diner

UPVC Double glazed window, laminate flooring and built in cupboards, kitchen comprises of fitted base and wall units, wooden counter tops, 1 1/2 stainless steel sink with mixer tap, electric oven, hob, extractor hood, under counter freezer, undercounter fridge, under counter drinks fridge and dishwasher

## Sun Room

UPVC Double glazed windows and 2 sets of french doors leading out to garden laminate flooring, walk in storage cupboard

## Landing

Carpet, staircase to loft Storage Room

## Bathroom

UPVC Double Glazed windows, Fully tiled, corner bath with shower over, low level w.c. sink

## Bedroom 1

UPVC Double Glazed window, radiator laminate flooring fitted wardrobes and matching bedside cabinets

## Bedroom 2

UPVC Double glazed window, radiator laminate flooring

## Bedroom 3

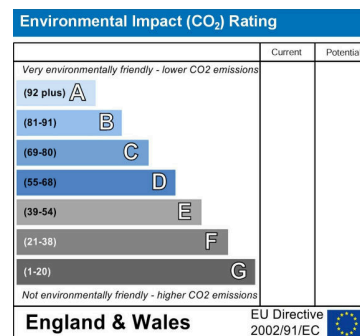
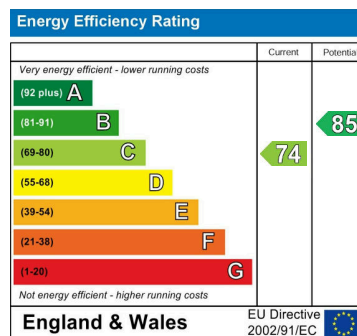
UPVC Double Glazed window, radiator, laminate flooring

## Loft Storage Room

Velux Double glazed window, carpet, electrical sockets

## Rear Exterior

Paved Patio, astro turf, raised decked area, bar and rear storage shed



Berkeley Shaw Estate Agents Limited.  
Company No. 0784754

Berkeley Shaw Real Estate Limited.  
Company No. 05206927

