



BerkeleyShaw
REAL ESTATE

11 Everest Road, Liverpool, Merseyside L23 5TN

£450,000

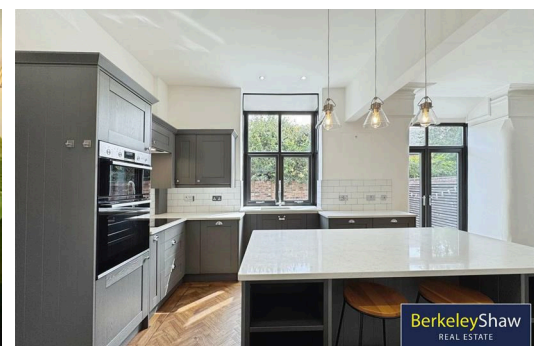
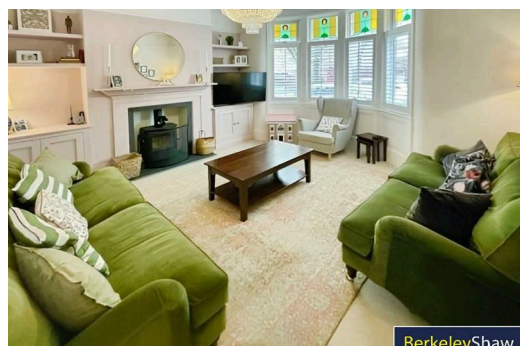
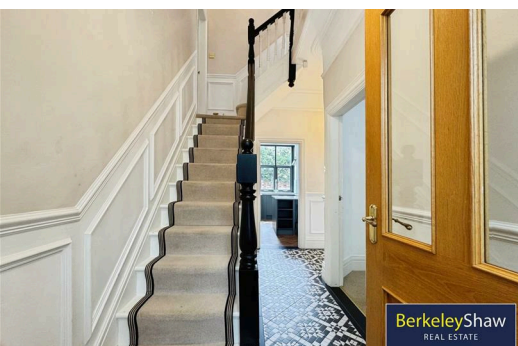
Everest Road, Crosby – Elegant Family Home with No Onward Chain

Positioned on the ever-popular Everest Road in Crosby, this exceptional four-bedroom home offers the perfect blend of timeless character and modern luxury – and is proudly offered with no onward chain.

Set just a short stroll from some of the region's most sought-after schools, including both primary and secondary options, and surrounded by a wealth of excellent local amenities, this turnkey property is ideal for families seeking space, style, and convenience.

Spanning two beautifully appointed floors, the accommodation begins with a welcoming vestibule and an impressive entrance hall featuring wood panelling and an understairs cloakroom.

To the front, a stunning bay-fronted living room provides a cosy yet stylish retreat, complete with a log burning stove, bespoke shutter blinds, custom-built storage, and an ornate ceiling – a perfect space to unwind. At the rear lies the true heart of the home – a spacious and light-filled kitchen diner, ideal for family life and entertaining. Featuring high-end Bosch integrated appliances, quartz worktops, a central island with breakfast bar, and French doors opening to the rear garden, it seamlessly blends function and flair.



Vestibule

Entrance hall

Living room

Kitchen diner

Utility room

Ground floor WC

Landing

Bedroom 1

Bedroom 2

Bedroom 3

Bedroom 4

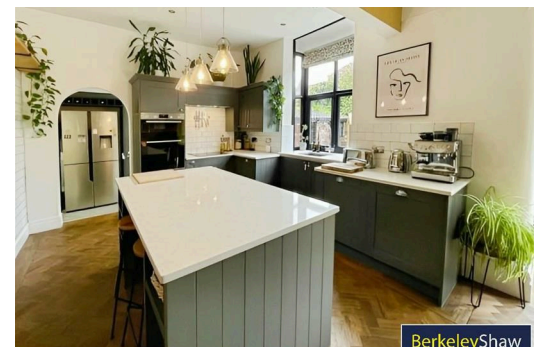
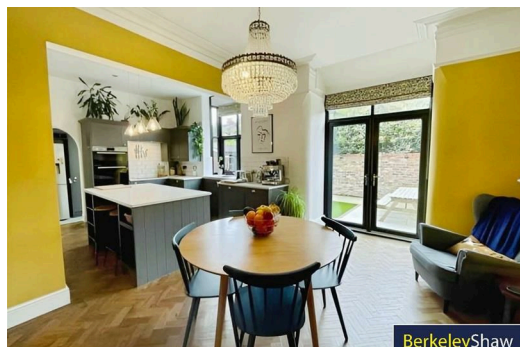
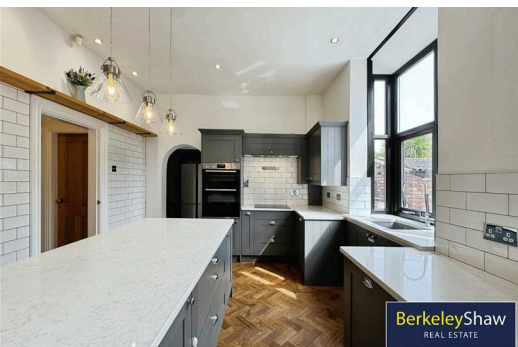
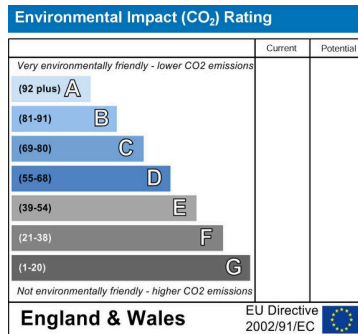
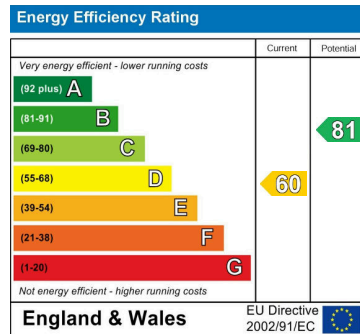
Family bathroom

Front elevation

Rear garden



While every attempt has been made to ensure the accuracy of the floorplan contained here, measurements of floor, ceiling, rooms and any other parts are approximate and no responsibility is taken for any errors, omissions or mis-statements. This plan is for illustrative purposes only and should be used as such by any prospective purchaser. The agents and their agents do not warrant or guarantee the accuracy of the floorplan. Made with Metropix 2022



Berkeley Shaw Estate Agents Limited.
Company No. 0784754

Berkeley Shaw Real Estate Limited.
Company No. 05206927

