



Waterloo Warehouse Waterloo Road, Liverpool, L3 0BH

£1,400 PCM

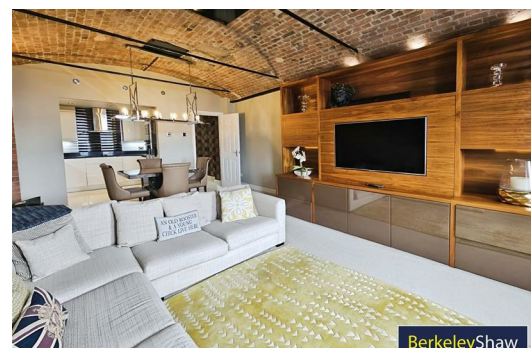
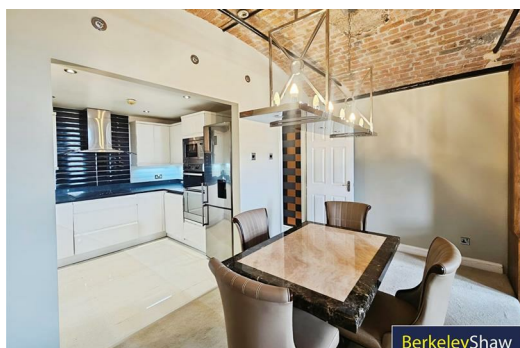
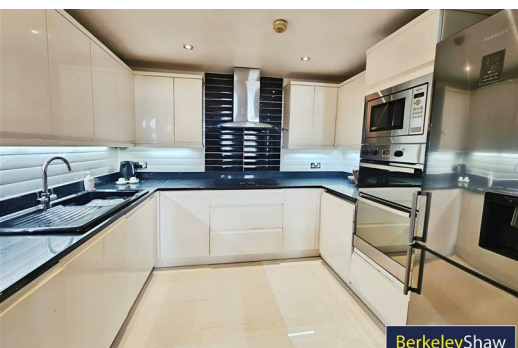
Introducing this immaculate two-bedroom apartment To Let, perfectly located in a highly sought-after waterfront area rich with historical features. This exceptional property is ideally suited to professionals seeking stylish modern living in an enviable setting. Waterloo Warehouse boasts lift access to this fifth floor duplex apartment.


The accommodation includes a luxurious master bedroom complete with a stylish en-suite bathroom, boasting modern fittings and a convenient heated towel rail. A spacious second double bedroom offers ample storage with built-in wardrobes, ensuring comfort and practicality. The main bathroom is elegantly appointed and features a free-standing bath, providing a tranquil space to unwind.


Ideal for professionals or couples seeking a premium waterfront residence, this property is further enhanced by allocated parking, offering peace of mind and convenience. The open-plan layout maximises both space and light, creating a welcoming and versatile living environment.

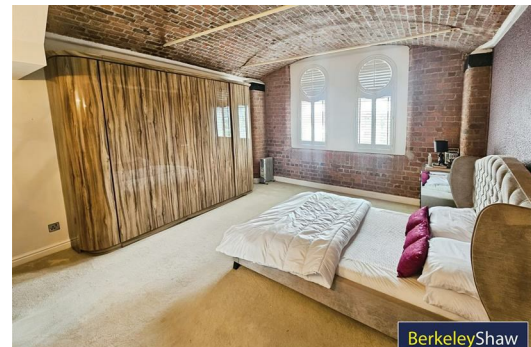
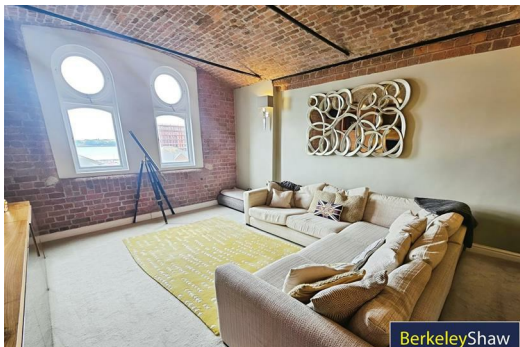
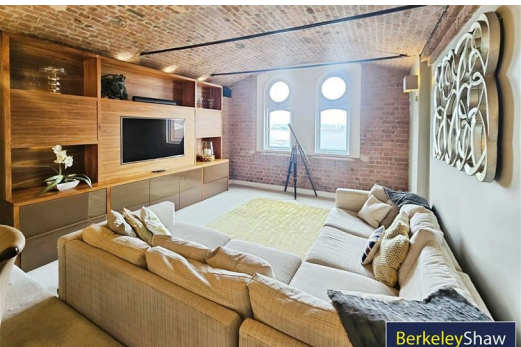
Residents will appreciate the attention to detail in every aspect of the décor and finish, highlighting the flat's immaculate condition throughout. With council tax band D, this stylish home combines contemporary comforts with an enviable waterside location, making it a rare opportunity not to be missed.

Experience modern living at its finest—contact us today to arrange a private viewing of this outstanding two-bedroom waterfront flat.



| Energy Efficiency Rating | | |
|---|----------------------------|---|
| | Current | Potential |
| Very energy efficient - lower running costs | | |
| (92 plus) A | | |
| (81-91) B | | |
| (69-80) C | | |
| (55-68) D | | |
| (39-54) E | | |
| (21-38) F | | |
| (1-20) G | | |
| Not energy efficient - higher running costs | | |
| | EU Directive 2002/91/EC |  |

| Environmental Impact (CO ₂) Rating | | |
|---|----------------------------|---|
| | Current | Potential |
| Very environmentally friendly - lower CO ₂ emissions | | |
| (92 plus) A | | |
| (81-91) B | | |
| (69-80) C | | |
| (55-68) D | | |
| (39-54) E | | |
| (21-38) F | | |
| (1-20) G | | |
| Not environmentally friendly - higher CO ₂ emissions | | |
| | EU Directive 2002/91/EC |  |



Berkeley Shaw Estate Agents Limited.
Company No. 0784754

Berkeley Shaw Real Estate Limited.
Company No. 05206927

