



5-7 Moor Lane, Liverpool, L23 2SE

£700 PCM

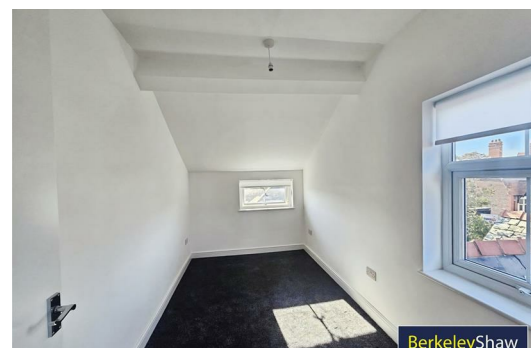
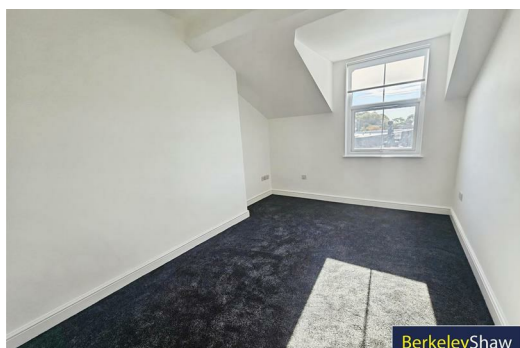
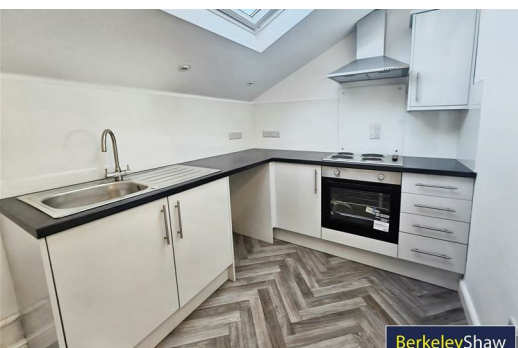
Presenting an immaculate one-bedroom flat to let in a sought-after Crosby Town Centre location, this property offers convenience and style perfectly suited for professionals. Upon entry, you are greeted by a spacious reception room, flooded with natural light through large windows, creating a welcoming and airy atmosphere ideal for both relaxing and entertaining.


The well-appointed kitchen benefits from ample dining space and is enhanced by abundant natural light, providing a pleasant environment for meal preparation and casual dining alike. The double bedroom is designed for comfort, offering a generous space for restful nights.


The modern bathroom is fitted with an electric shower, providing a refreshing start to every day. Every aspect of this flat has been thoughtfully maintained to an immaculate standard, ensuring a pristine move-in experience.

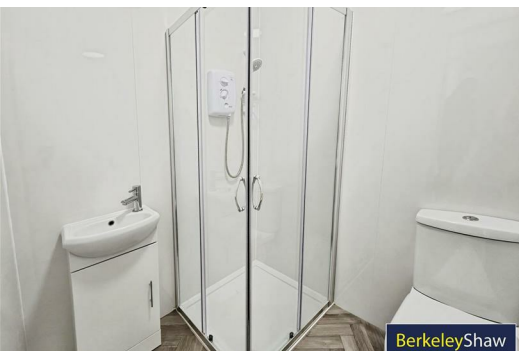
Set within a highly desirable urban area, residents can take advantage of the excellent local amenities, dining options, and superb transport links on their doorstep, catering to all lifestyle needs. This property is particularly well-suited to professionals seeking contemporary city living in a vibrant and well-connected neighbourhood.

With its stylish presentation, spacious accommodation, and enviable location, this flat represents an outstanding rental opportunity. Early viewing is highly recommended to appreciate everything this impressive



Energy Efficiency Rating		
	Current	Potential
Very energy efficient - lower running costs		
(92 plus) A		
(81-91) B		
(69-80) C		
(55-68) D		
(39-54) E		
(21-38) F		
(1-20) G		
Not energy efficient - higher running costs		
England & Wales EU Directive 2002/91/EC 		

Environmental Impact (CO ₂) Rating		
	Current	Potential
Very environmentally friendly - lower CO ₂ emissions		
(92 plus) A		
(81-91) B		
(69-80) C		
(55-68) D		
(39-54) E		
(21-38) F		
(1-20) G		
Not environmentally friendly - higher CO ₂ emissions		
England & Wales EU Directive 2002/91/EC 		



Berkeley Shaw Estate Agents Limited.
Company No. 0784754

Berkeley Shaw Real Estate Limited.
Company No. 05206927

