



BerkeleyShaw

19 Oak Road, Liverpool, L36 5XY

£1,600 Per Month

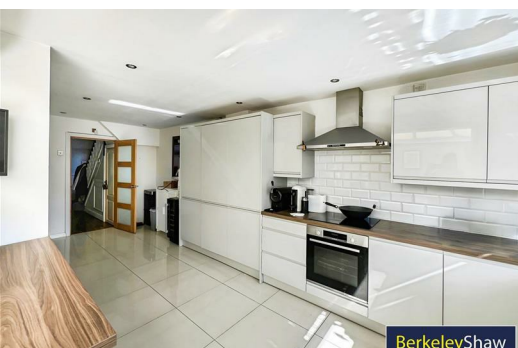
We are thrilled to introduce this semi-detached house, currently available to let. This property is in a good condition, ready for tenants who value quality and comfort. It is an ideal home for families, located in a highly sought-after area within close proximity to local amenities and reputable schools.

This inviting home boasts three well-appointed bedrooms. The master bedroom, standing out for its size and delightful finishes, is sure to impress. The second bedroom – a double, is generously sized, offering ample space for inhabitants. The third bedroom is a single, ideal for a nursery or home office.

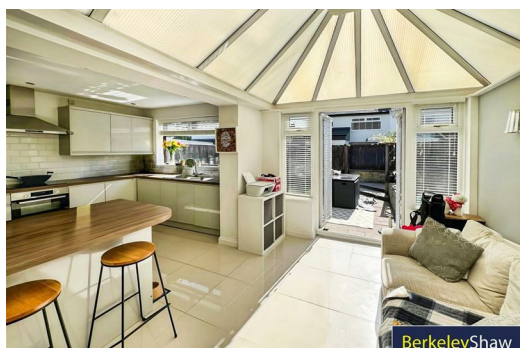
Boasting a open-plan living and dining room, this house provides ample living space, perfect for family gatherings and relaxed evenings. The unique feature of this house is its open-plan kitchen conservatory. The kitchen includes an integrated oven, fridge/freezer and wine rack. Here, one can enjoy plenty of sunlight, enhancing your cooking and dining experience.

Sitting comfortably in Council tax band C, and with an energy performance certificate (EPC) rating C, this house strikes a balance between energy efficiency and reasonable maintenance costs. Another outstanding perk of this property is its enjoyable garden, perfect for warm summer afternoons, BBQs and outdoor play.

In summary, the charm, functionality, location, and features of this property align to create a beautiful home for a lucky family. Opportunities like this don't last long, so please contact us today to arrange your viewing.



BerkeleyShaw



BerkeleyShaw



BerkeleyShaw

Hallway

Open Plan Living room/ Dining room

Kitchen

Conservatory

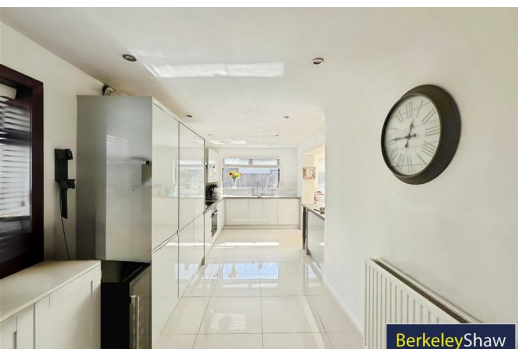
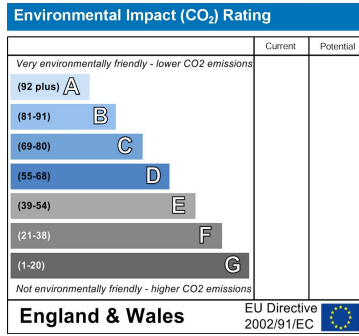
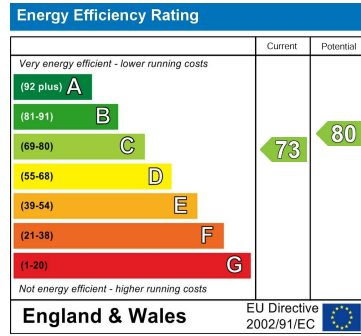
External Garden

Bathroom

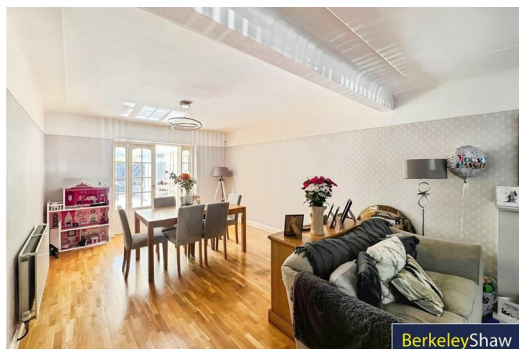
Master Bedroom

Second Bedroom

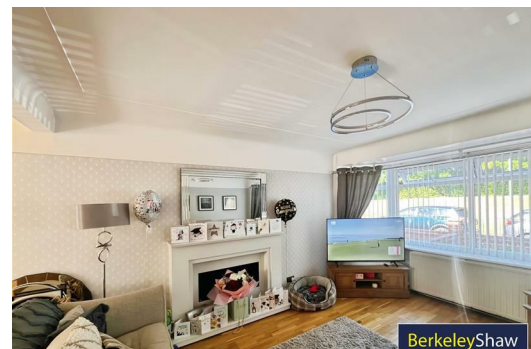
Third bedroom



BerkeleyShaw



BerkeleyShaw



BerkeleyShaw



Berkeley Shaw Estate Agents Limited.
Company No. 0784754

Berkeley Shaw Real Estate Limited.
Company No. 05206927

