



17 Deyes Lane, Liverpool, L31 6DE

£1,200 PCM

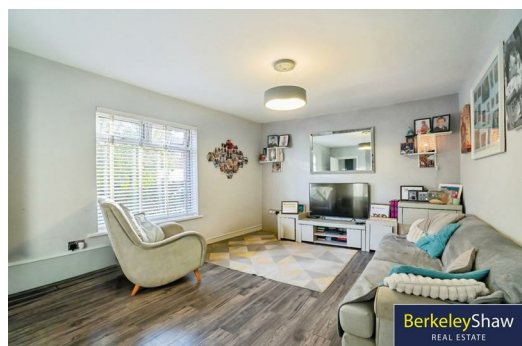
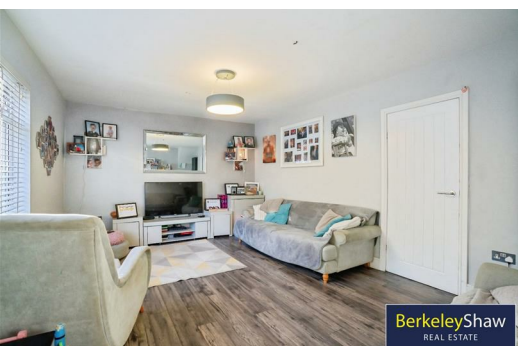
Available to let is this neutrally decorated, semi-detached house located on Deyes Lane. Perfectly suited for families, the property is ideally situated close to excellent public transport links and nearby schools, making daily commutes and school runs easy and convenient.

Upon entry, the home offers a welcoming, separate reception room featuring large windows that flood the space with natural light, creating a bright and inviting atmosphere. The modern kitchen is equally well-lit and benefits from ample dining space, ideal for family meals and entertaining. A convenient downstairs WC adds to the functionality for busy households.

Upstairs, you'll find three well-proportioned bedrooms. The master bedroom provides a comfortable retreat, while a generous double bedroom and a single bedroom offer versatile options for family members or guests. The family bathroom is finished to a high standard and includes a luxurious rain shower and built-in storage, helping to keep the space tidy and organised.

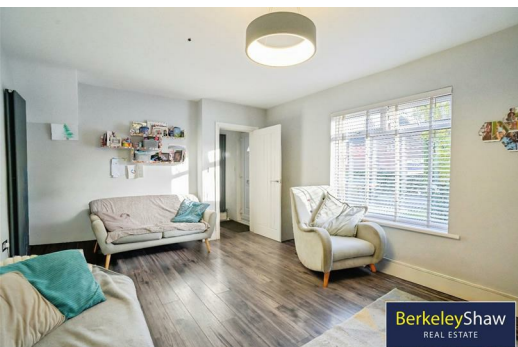
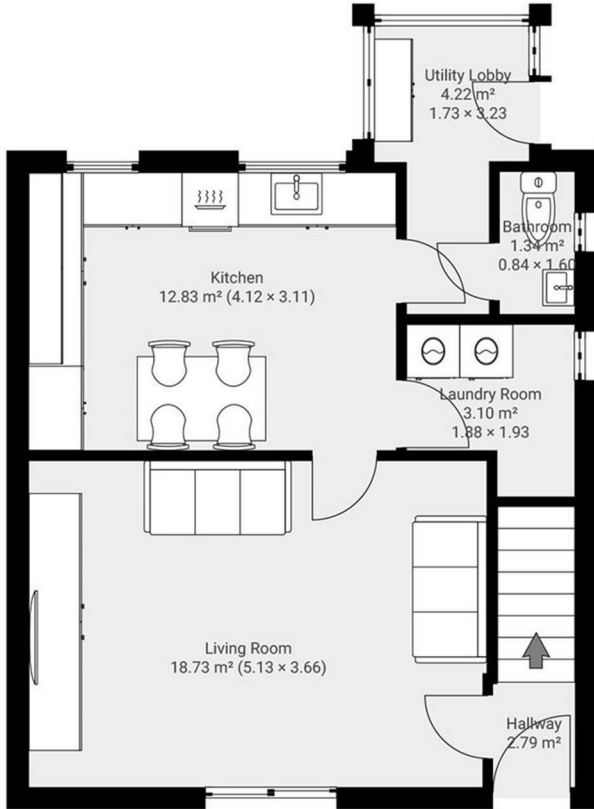
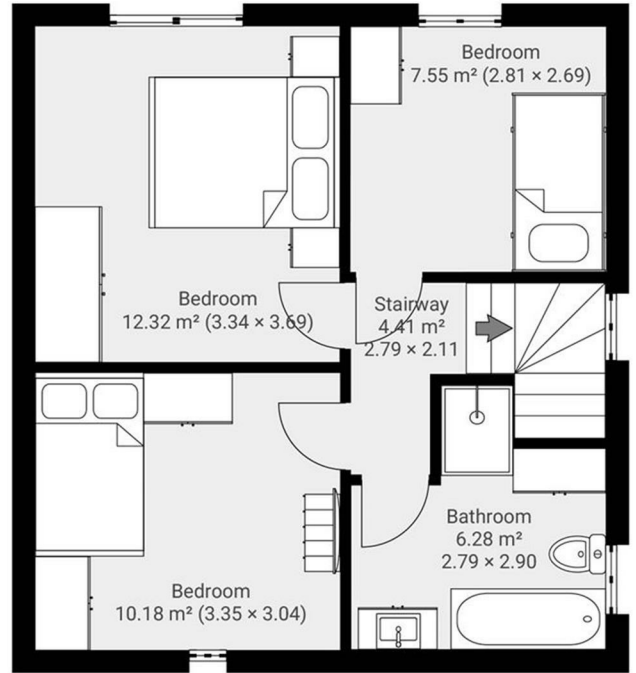
Additional living space extends outdoors, with a well-maintained garden providing a perfect place for children to play, relaxing, or entertaining outdoors in warmer months.

The property presents an ideal opportunity for families seeking a thoughtfully laid out and comfortable home in a desirable area with excellent local amenities. Early viewing is highly recommended to appreciate all this property has to offer.



Energy Efficiency Rating		Current	Potential
Very energy efficient - lower running costs			
(92 plus) A			
(81-91) B			
(69-80) C			
(55-68) D			
(39-54) E			
(21-38) F			
(1-20) G			
Not energy efficient - higher running costs			
England & Wales		EU Directive 2002/91/EC	

Environmental Impact (CO ₂) Rating		Current	Potential
Very environmentally friendly - lower CO ₂ emissions			
(92 plus) A			
(81-91) B			
(69-80) C			
(55-68) D			
(39-54) E			
(21-38) F			
(1-20) G			
Not environmentally friendly - higher CO ₂ emissions			
England & Wales		EU Directive 2002/91/EC	



Berkeley Shaw Estate Agents Limited.
Company No. 0784754

Berkeley Shaw Real Estate Limited.
Company No. 05206927

