



BerkeleyShaw

Scarisbrick Gardens Scarisbrick New Road, Southport, PR8 6PQ

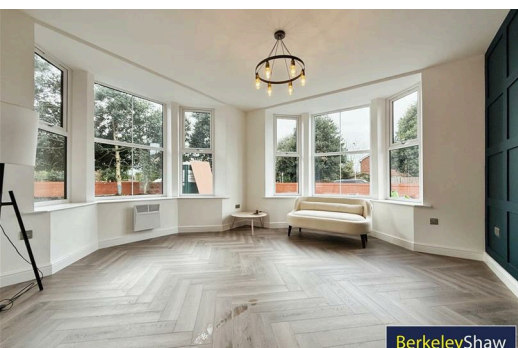
£220,000

Nestled on the prestigious Scarisbrick New Road in Southport, this stunning development offers a luxurious lifestyle in a brand new development of seven executive apartments. Boasting a high specification finish, these apartments have been designed with practicality and comfort at heart.

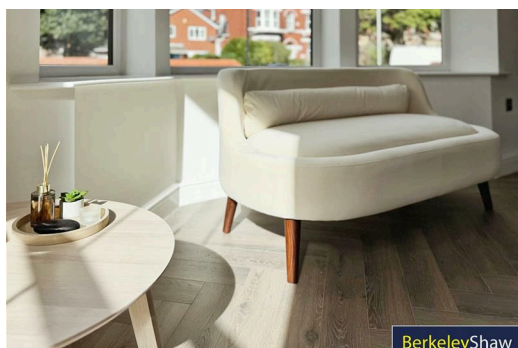
With resident parking available for one vehicle, convenience is at your doorstep. Whether you're looking to relax in the spacious living area or unwind in the well-appointed bedrooms, these apartments provide the perfect blend of comfort and style. The kitchen's and bathrooms are stylishly finished with the added luxury of under floor heating.

Embrace the charm of Southport living in this modern and elegant apartment - your dream home awaits! Viewing is strictly by appointment only, contact us today to arrange a viewing!

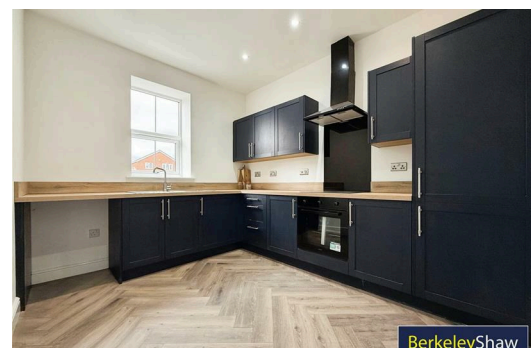
Leasehold 999 years
Service charge £125 per month
Apartment 3 Two Bed 89.77 SqM



BerkeleyShaw



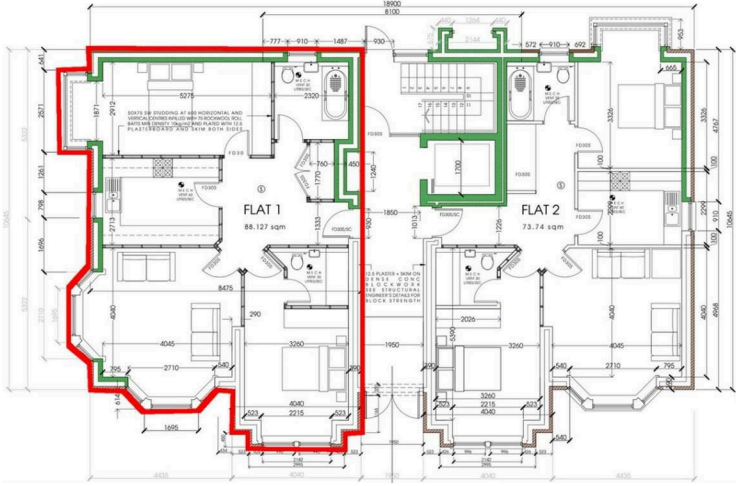
BerkeleyShaw



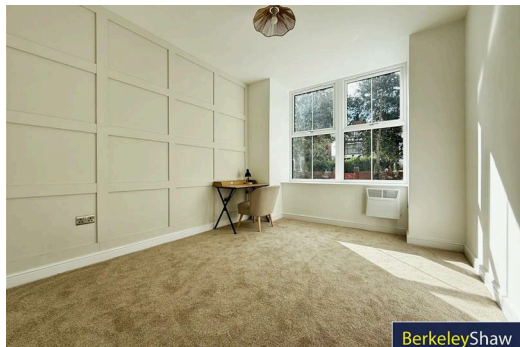
BerkeleyShaw

Energy Efficiency Rating		Current	Potential
Very energy efficient - lower running costs			
(92 plus)	A		
(81-91)	B		
(69-80)	C		
(55-68)	D		
(39-54)	E		
(21-38)	F		
(1-20)	G		
Not energy efficient - higher running costs			
England & Wales		EU Directive 2002/91/EC	

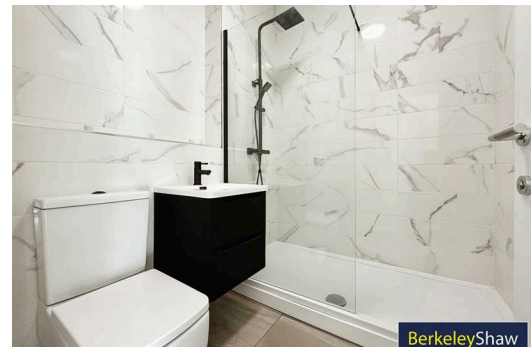
Environmental Impact (CO ₂) Rating		Current	Potential
Very environmentally friendly - lower CO ₂ emissions			
(92 plus)	A		
(81-91)	B		
(69-80)	C		
(55-68)	D		
(39-54)	E		
(21-38)	F		
(1-20)	G		
Not environmentally friendly - higher CO ₂ emissions			
England & Wales		EU Directive 2002/91/EC	



BerkeleyShaw



BerkeleyShaw



BerkeleyShaw



Berkeley Shaw Estate Agents Limited.
Company No. 0784754

Berkeley Shaw Real Estate Limited.
Company No. 05206927

