



## Unity Building, 3 Rumford Place, Liverpool, Merseyside L3 9BW

**£1,250 Per Month**

Berkeley Shaw we are pleased to offer this two bedroom duplex apartment situated on the 16th floor of the Unity Building. The property offers magnificent views of Liverpool City Centre and the River Mersey from the living area and bedrooms.

The Apartment briefly comprises entrance hallway, bedroom and bathroom to the lower floor and to the second the master bedroom and En suite and the open plan kitchen/living area.


The property also benefits from a secure allocated parking space.


Deposit :£1250

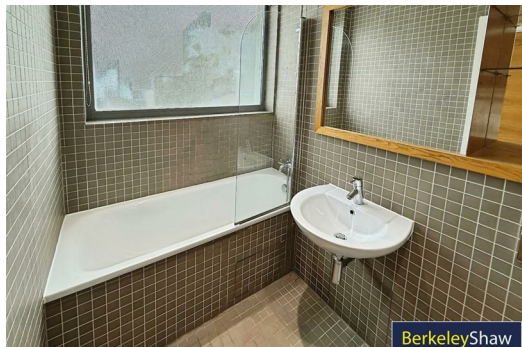
Council Tax: Band D

Lease Length: minimum 12 months



Energy Efficiency Rating		
	Current	Potential
Very energy efficient - lower running costs		
(92 plus) <b>A</b>		
(81-91) <b>B</b>		
(69-80) <b>C</b>		
(55-68) <b>D</b>		
(39-54) <b>E</b>		
(21-38) <b>F</b>		
(1-20) <b>G</b>		
Not energy efficient - higher running costs		
	74	85
<b>England &amp; Wales</b>	EU Directive 2002/91/EC 	

Environmental Impact (CO <sub>2</sub> ) Rating		
	Current	Potential
Very environmentally friendly - lower CO <sub>2</sub> emissions		
(92 plus) <b>A</b>		
(81-91) <b>B</b>		
(69-80) <b>C</b>		
(55-68) <b>D</b>		
(39-54) <b>E</b>		
(21-38) <b>F</b>		
(1-20) <b>G</b>		
Not environmentally friendly - higher CO <sub>2</sub> emissions		
<b>England &amp; Wales</b>	EU Directive 2002/91/EC 	



Berkeley Shaw Estate Agents Limited.  
Company No. 0784754

Berkeley Shaw Real Estate Limited.  
Company No. 05206927

