

BerkeleyShaw

The Lighthouse Church Walk, Bootle, L20 4AS

£995 PCM

Welcome to this stunning New Development located at The Lighthouse, Church Walk in Bootle TO LET. This modern residence offers a perfect blend of comfort and style, making it an ideal choice for those seeking a contemporary living space.

This 15th Floor 2 Bedroom apartment features a spacious Open Plan reception room that provides a warm and inviting atmosphere, perfect for relaxing or entertaining guests. With two well-proportioned bedrooms, there is ample space for a small family or professionals looking for a comfortable home. The shower room ensuring convenience and privacy.

One of the standout features of this property is the lovely balcony, which offers a delightful outdoor space to enjoy fresh air and views. The apartment comes unfurnished, allowing you the freedom to personalise the space to your taste. Additionally, essential appliances are included, making your move-in process seamless and hassle-free.

This apartment is well-connected to local amenities and transport links, providing easy access to the wider region.

Deposit: £1148

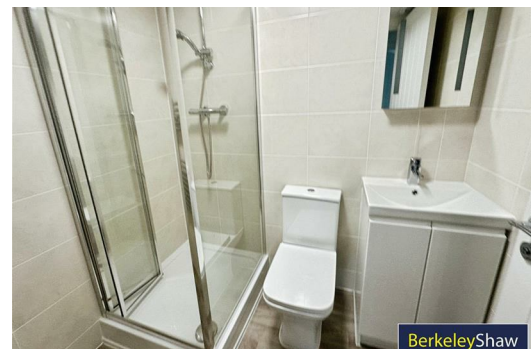
Council Tax Band: Not Yet Banded



BerkeleyShaw

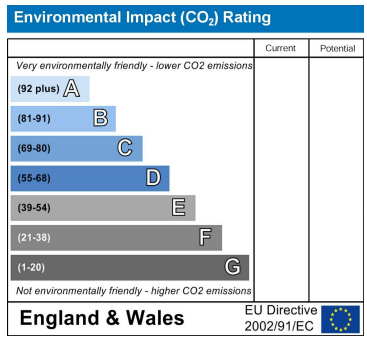
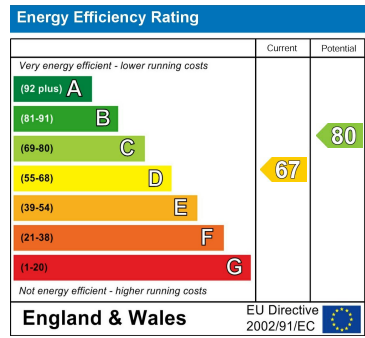


BerkeleyShaw

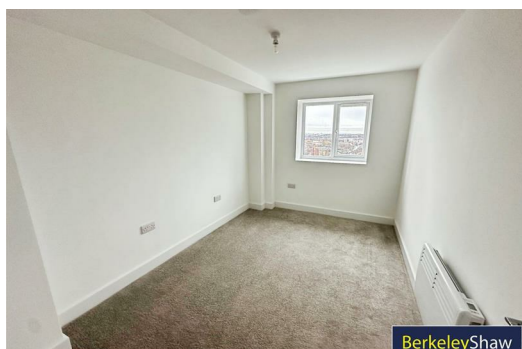


BerkeleyShaw

- Hallway
- Open Plan Lounge Kitchen
- Storage Room
- Bedroom 1
- Shower Room
- Bedroom 2
- Balcony



BerkeleyShaw



BerkeleyShaw



BerkeleyShaw



Berkeley Shaw Estate Agents Limited.
Company No. 0784754

Berkeley Shaw Real Estate Limited.
Company No. 05206927

