



BerkeleyShaw
REAL ESTATE

52 Maritime Court, Bootle, L30 7PU

£750 PCM

Welcome to this charming Part Furnished ground floor apartment TO LET located in the desirable Maritime Court, Bootle. This delightful property is perfectly suited for those aged over 55, offering a comfortable and secure living environment.

As you enter the apartment, you are greeted by a spacious reception room that provides a warm and inviting atmosphere, ideal for relaxation or entertaining guests. The layout is thoughtfully designed, ensuring that every inch of space is utilised effectively.

The apartment features two bedrooms, providing ample space for rest and personal belongings. Each room is filled with natural light, creating a bright and airy feel throughout the home. The bathroom is conveniently located and equipped with essential amenities, ensuring your daily routines are both comfortable and efficient.

One of the standout features of this property is the dedicated parking space for one vehicle, offering convenience and ease of access. The location in Maritime Court is not only peaceful but also well-connected, making it easy to enjoy the local amenities and attractions that Bootle has to offer.

With its thoughtful design and prime location, it is sure to appeal to anyone looking for a comfortable home in a welcoming environment. Do not miss the chance to make this lovely apartment your own.



Hallway

Lounge

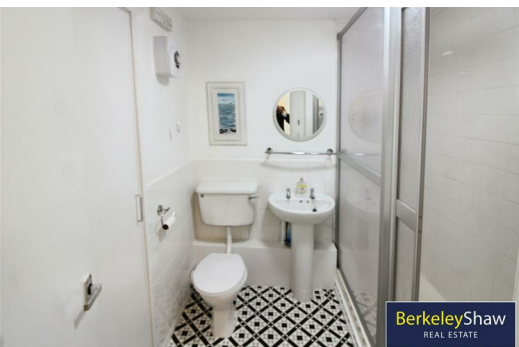
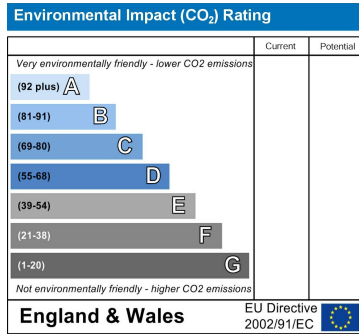
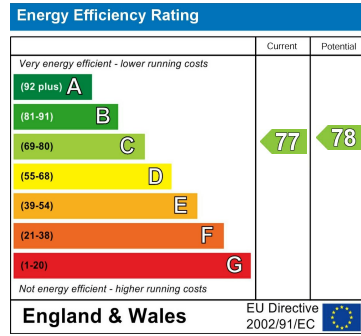
Kitchen

Bedroom 1

Bedroom 2

Shower Room

Communal Gardens



BerkeleyShaw
REAL ESTATE



BerkeleyShaw
REAL ESTATE



BerkeleyShaw
REAL ESTATE



Berkeley Shaw Estate Agents Limited.
Company No. 0784754

Berkeley Shaw Real Estate Limited.
Company No. 05206927

