



BerkeleyShaw

The Lighthouse Church Walk, Bootle, L20 4AS

£925 PCM

Welcome to The Lighthouse, an exquisite new build apartment located on Church Walk in Bootle. This modern residence offers a perfect blend of comfort and style, making it an ideal choice for those seeking a contemporary living space.

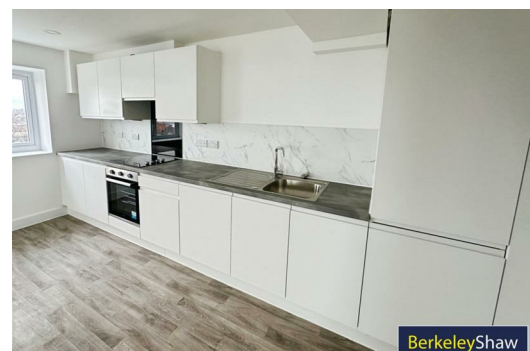
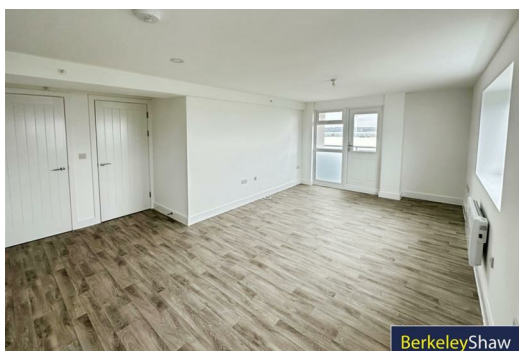
Upon entering the apartment, you will find a spacious reception room that serves as the heart of the home. This inviting area is perfect for relaxation or entertaining guests, providing a warm and welcoming atmosphere. The apartment boasts two well-proportioned bedrooms, each designed to offer a peaceful retreat at the end of the day.

The bathroom features a stylish shower room, equipped with modern fixtures that enhance your daily routine.

One of the standout features of this property is the delightful balcony, where you can enjoy fresh air and views of the surrounding area. It is an excellent spot for morning coffee or unwinding after a long day.

Situated in Bootle, The Lighthouse benefits from a convenient location with easy access to local amenities, transport links, and green spaces. This apartment is perfect for professionals, or anyone looking to downsize without compromising on quality.

Deposit: £1067
Council Tax: Not yet Branded



Hallway

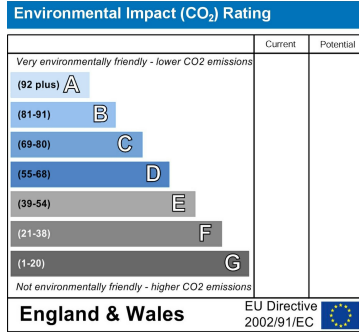
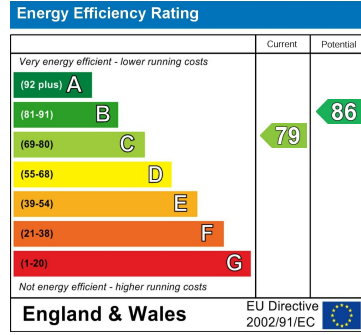
Open Plan Lounge Kitchen

Storage Cupboard

Bedroom 1

Shower Room

Bedroom 2



Berkeley Shaw Estate Agents Limited.
Company No. 0784754

Berkeley Shaw Real Estate Limited.
Company No. 05206927

