



The Lighthouse Church Walk, Bootle, L20 4AS

£950 PCM

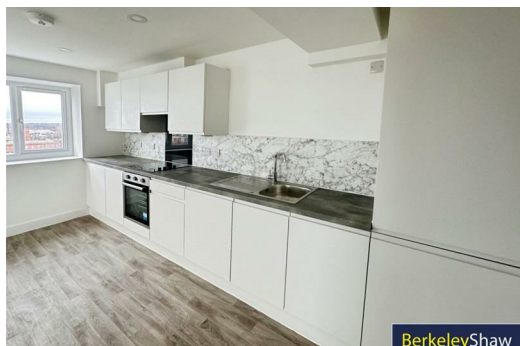
Welcome to The Lighthouse, a charming apartment is TO LET located on Church Walk in the vibrant area of Bootle. This delightful property features two well-proportioned bedrooms, making it an ideal choice for couples, small families, or individuals seeking extra space. The apartment boasts a comfortable reception room, perfect for relaxation or entertaining guests.

One of the standout features of this residence is the lovely balcony, where you can enjoy fresh air and views of the surrounding area. The apartment is conveniently situated close to Bootle Strand, providing easy access to a variety of shops, restaurants, and local amenities, ensuring that everything you need is just a short stroll away.

This unfurnished apartment comes with essential appliances included, allowing you to move in with ease and make it your own. The bathroom is well-appointed, catering to your daily needs with comfort and style.

The Lighthouse offers a wonderful opportunity to enjoy modern living in a well-connected location. Don't miss the chance to make this delightful space your new home.

Deposit: £1096
Council Tax: Not yet branded



Hallway

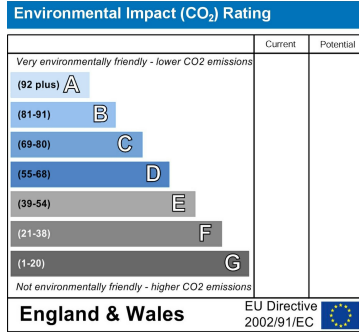
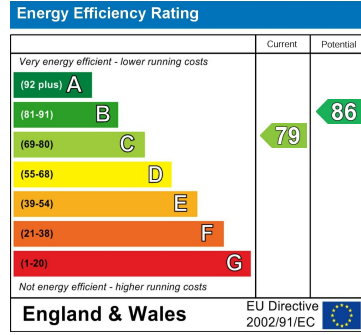
Open Plan Lounge Kitchen

Storage Room

Bedroom 1

Shower Room

Bedroom 2



Berkeley Shaw Estate Agents Limited.
Company No. 0784754

Berkeley Shaw Real Estate Limited.
Company No. 05206927

