



Chestnut View, 7 Brows Lane, Liverpool, L37 3AF

Offers Over £275,000

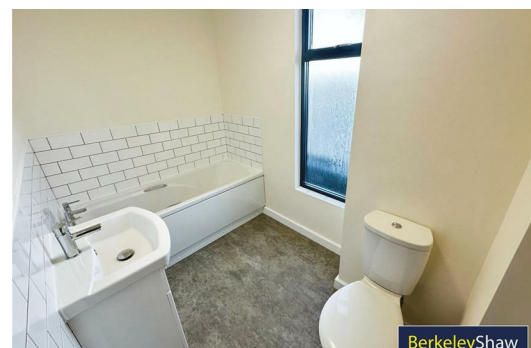
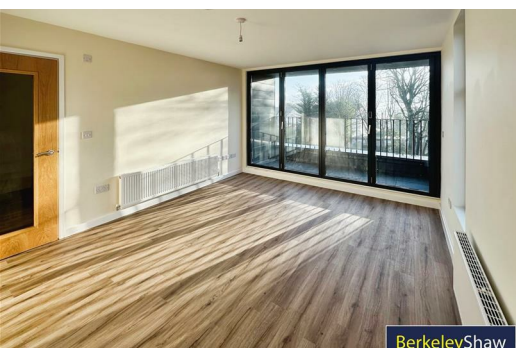
Two-Bedroom Penthouse Apartment — NO CHAIN

Set on the top floor of Chestnut View, this penthouse has the space, light and easy flow that make modern living straightforward. There's lift access to the communal hallway, and the apartment opens into a welcoming entrance hall with two useful storage cupboards.

The open-plan kitchen, dining and living area is the standout. Full-width bifolding doors flood the room with daylight and open to a private terrace — a natural spot for a quiet coffee or relaxed evenings with friends. The kitchen is neatly planned with integrated appliances, including an induction hob, electric oven and fridge-freezer, with plenty of cupboard and worktop space to keep everything organised.

Both bedrooms are comfortable doubles. The principal bedroom comes with a dressing area and a smart en-suite shower room. A separate four-piece bathroom serves the apartment, fitted with a bath, a walk-in shower, wash basin and WC.

Practicalities are well covered: gas central heating, double glazing, residents' parking and access to well-kept communal gardens, plus lift access throughout the building.



Hallway

Entrance door, flooring, access to 2 x Walk In Storage Cupboards, Radiator

Open Plan Kitchen/Lounge

Double glazed windows, flooring, radiator, kitchen comprises of a range of fitted base and wall units with integrated appliances include fridge / freezer, washer dryer, electric cooker and hob, extractor hood, Inset sink with mixer tap, double glazed windows and bifold doors

Private Terrace

Bedroom 1

Double glazed window, radiator, carpet

Dressing Room / Office

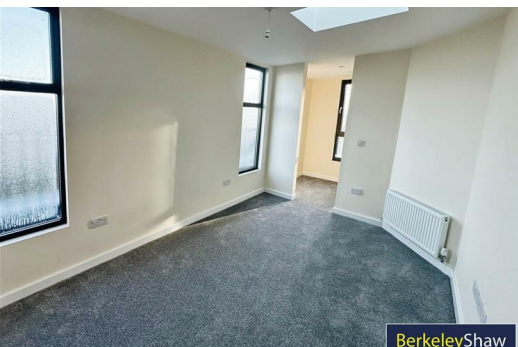
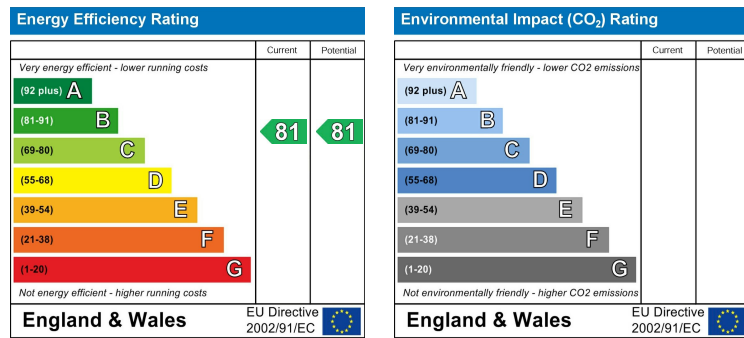
Double glazed window carpet

Ensuite Shower Room

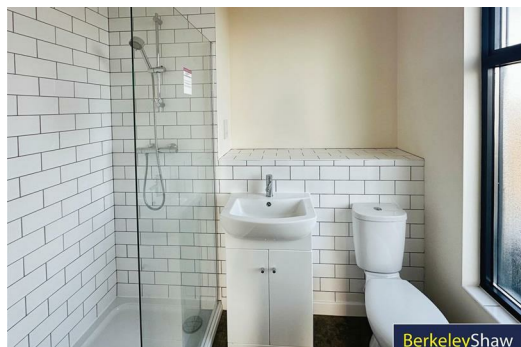
Double glazed window, flooring, part tiled walls in all wet areas,, low level w.c. sink and a separate walk in shower with glazed enclosure

Bedroom 2

Double glazed window, radiator, carpet



BerkeleyShaw



BerkeleyShaw



BerkeleyShaw



Berkeley Shaw Estate Agents Limited.
Company No. 0784754

Berkeley Shaw Real Estate Limited.
Company No. 05206927

