

## Crawford Gardens, 161A Rose Lane, Liverpool, L18 5AD

### £1,150 Per Month

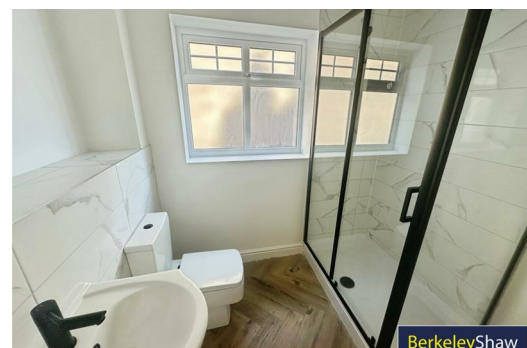
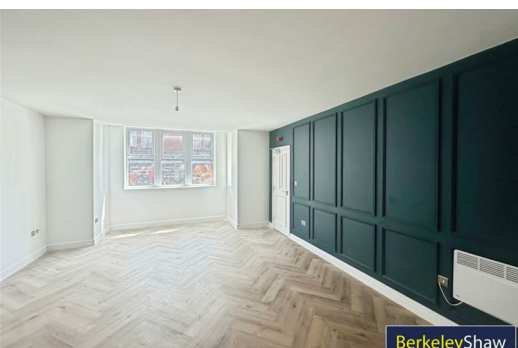
Welcome to this charming newly converted apartment located on the desirable Rose Lane in Liverpool. This delightful property offers a perfect blend of modern living and comfort, making it an ideal choice for individuals or couples seeking a stylish home.

Upon entering, you will find a well-appointed reception room that provides a warm and inviting atmosphere, perfect for relaxation or entertaining guests. The apartment features one spacious bedroom, designed to be a peaceful retreat, ensuring a restful night's sleep. The shower room is thoughtfully designed, offering both functionality and style.

The fitted kitchen is a highlight of this property, equipped with contemporary appliances and ample storage space, making it a joy to prepare meals.

Situated in a vibrant area of Liverpool, this apartment is conveniently located near local amenities, shops, and transport links, ensuring that everything you need is within easy reach. This property presents an excellent opportunity to enjoy modern living in a sought-after location. Don't miss the chance to make this delightful apartment your own.

Council Tax Band: not yet banded  
Deposit £1326



# Hallway

# Open Plan lounge kitchen

# Shower Room

# Bedroom 1

# Exterior

Energy Efficiency Rating		
	Current	Potential
<i>Very energy efficient - lower running costs</i>		
(92 plus) <b>A</b>		
(81-91) <b>B</b>		
(69-80) <b>C</b>		
(55-68) <b>D</b>		
(39-54) <b>E</b>		
(21-38) <b>F</b>		
(1-20) <b>G</b>		
<i>Not energy efficient - higher running costs</i>		
<b>England &amp; Wales</b>	EU Directive 2002/91/EC	

Environmental Impact (CO <sub>2</sub> ) Rating		
	Current	Potential
<i>Very environmentally friendly - lower CO<sub>2</sub> emissions</i>		
(92 plus) <b>A</b>		
(81-91) <b>B</b>		
(69-80) <b>C</b>		
(55-68) <b>D</b>		
(39-54) <b>E</b>		
(21-38) <b>F</b>		
(1-20) <b>G</b>		
<i>Not environmentally friendly - higher CO<sub>2</sub> emissions</i>		
<b>England &amp; Wales</b>	EU Directive 2002/91/EC	



Berkeley Shaw Estate Agents Limited.  
Company No. 0784754

Berkeley Shaw Real Estate Limited.  
Company No. 05206927

