

The Lighthouse Church Walk, Bootle, L20 4AS

£900 PCM

Welcome to The Light House, a charming apartment located on Church Walk in Bootle. This delightful two-bedroom residence offers a perfect blend of comfort and convenience, making it an ideal choice for individuals or small families seeking a new home.

Upon entering the apartment, you will find a spacious reception room that provides a warm and inviting atmosphere, perfect for relaxation or entertaining guests. The layout is designed to maximise space and natural light, creating a bright and airy environment throughout.

The apartment features two well-proportioned bedrooms, providing ample space for rest and personalisation. Each room is designed to offer a peaceful retreat, ensuring a good night's sleep. The shower room is modern and functional, equipped with essential amenities to cater to your daily needs.

This unfurnished apartment allows you the freedom to furnish the space to your taste, making it truly your own. Additionally, essential appliances are included, adding to the convenience of your new home.

Situated in Bootle, The Light House benefits from a range of local amenities, including shops, parks, and excellent transport links, making it easy to explore the surrounding area and beyond. Whether you are commuting to work or enjoying leisure activities, this location offers a vibrant community atmosphere.



Hallway

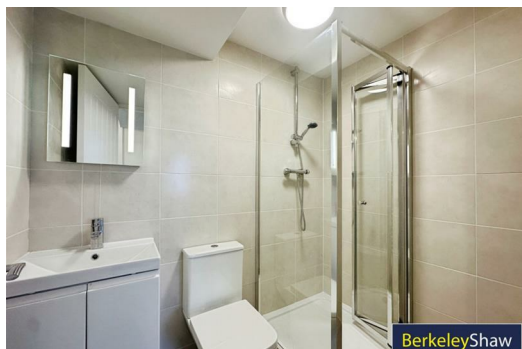
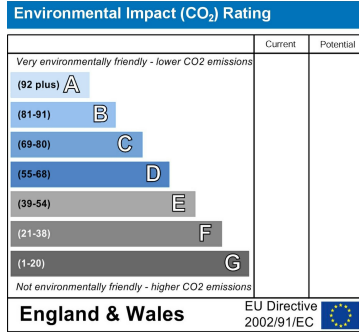
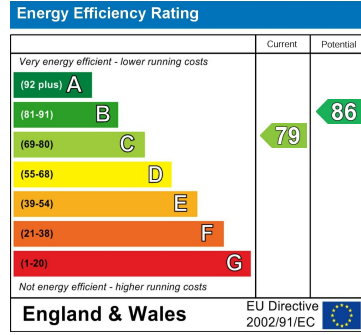
Open Plan Lounge Kitchen

Storage Cupboard

Bedroom 1

Shower Room

Bedroom 2



Berkeley Shaw Estate Agents Limited.
Company No. 0784754

Berkeley Shaw Real Estate Limited.
Company No. 05206927

