



BerkeleyShaw

The Lighthouse Church Walk, Bootle, L20 4AS

£995 PCM

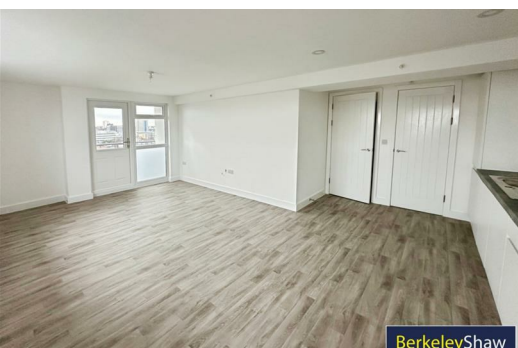
Welcome to The Lighthouse, a charming Unfurnished apartment To Let located on Church Walk in Bootle. This delightful property offers a perfect blend of comfort and modern living, making it an ideal choice for individuals or small families seeking a new home.

The apartment features a spacious reception room that seamlessly connects to an open-plan kitchen, creating a warm and inviting atmosphere. The lounge area is enhanced by a lovely balcony, perfect for enjoying a morning coffee or unwinding in the evening. The kitchen comes equipped with essential appliances, ensuring that you have everything you need to prepare meals with ease.

With two well-proportioned bedrooms, this apartment provides ample space for relaxation and rest. The shower room is conveniently located, offering both functionality and comfort.

Situated in a desirable location, The Lighthouse is close to local amenities and transport links, making it easy to explore the surrounding area. Whether you are looking to enjoy the vibrant community or simply relax in your new home, this apartment is a wonderful opportunity not to be missed.

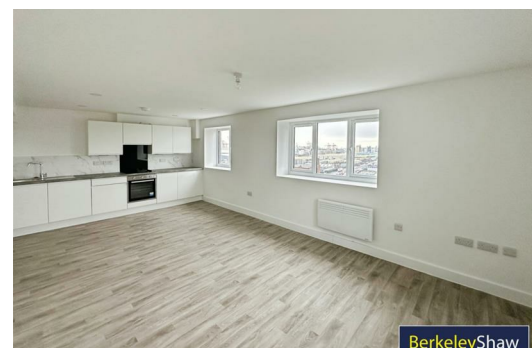
Deposit: £1148
Council Tax: Not yet banded



BerkeleyShaw



BerkeleyShaw



BerkeleyShaw

Hallway

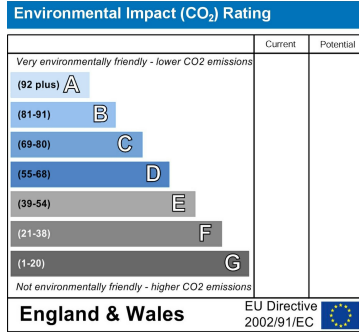
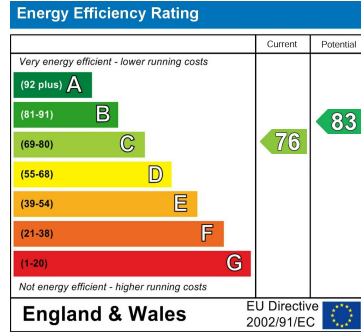
Open Plan Lounge Kitchen

Storage Room

Bedroom 1

Shower Room

Bedroom 2



Berkeley Shaw Estate Agents Limited.
Company No. 0784754

Berkeley Shaw Real Estate Limited.
Company No. 05206927

