



9 Canterbury Avenue, Liverpool, Merseyside L22 2AX

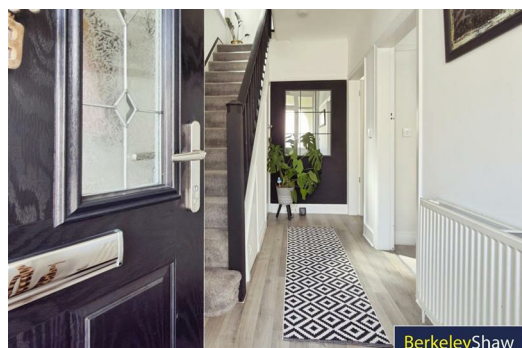
Offers Over £290,000

Simply stunning throughout, this immaculate three-bedroom semi-detached home offers stylish and spacious accommodation in a highly sought-after location close to College Road, the train station and the beach.

The welcoming lounge features a beautiful large bay window, flooding the room with natural light, alongside a charming log burner creating the perfect focal point. To the rear, the impressive open-plan kitchen/dining room provides an ideal space for modern family living and entertaining, with patio doors opening onto a sunny south-facing rear garden. The outdoor space benefits from a decked patio area and two useful brick-built storage rooms, one of which is fitted with electricity and currently utilised as a laundry room.

To the first floor, a contemporary family bathroom is fitted with a full-size panelled bath and overhead shower. The spacious principal bedroom enjoys a large bay window and fitted wardrobes, while the second bedroom is a generous rear-facing double. The third bedroom is a well-proportioned single room, comfortably accommodating a queen-size bed.

Further benefits include driveway parking, a beautifully maintained south-facing garden and an exceptional standard of presentation throughout. Early viewing is highly recommended.



Hall

12'5" x 6'6" (3.80 x 2.0)

UPVC window to side, electric cupboard housing electric meter, under stairs storage with gas meter, radiator and laminate flooring

Lounge

12'9" x 11'1" (3.90 x 3.40)

UPVC double glazed splay bay window, radiator and wood burning stove with oak beam surround, fitted shelves and carpets.

Kitchen/Dining Room

18'4" x 13'1" (5.6 x 4.0)

With UPVC patio doors onto rear garden, window to side, radiator, range of wall and base units with electric hob and oven, extractor fan contemporary sink with mixer tap, integrated fridge-freezer, plumbing for dishwasher, under stairs storage part tiled walls, radiator and laminate flooring

Landing

Bedroom 1

14'5" x 11'1" (4.40 x 3.40)

DOUBLE - UPVC double glazed splay bay window to front, radiator

Bedroom 2

11'5" x 11'1" (3.50 x 3.40)

DOUBLE - UPVC double glazed window to rear, radiator

Bedroom 3

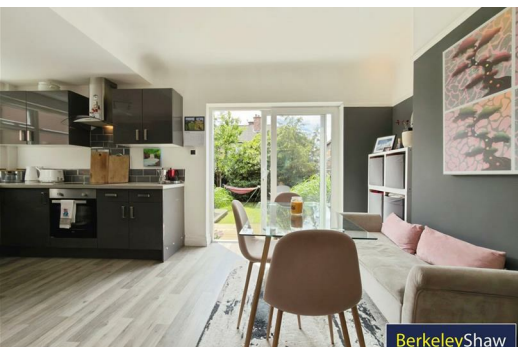
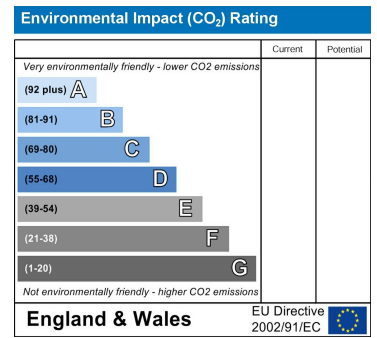
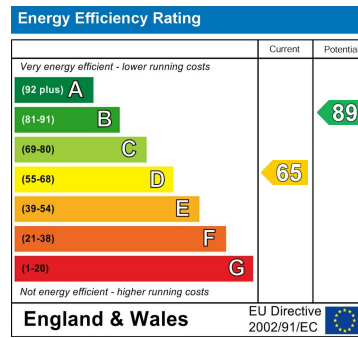
6'6" x 8'10" (2.0 x 2.70)

SINGLE - UPVC double glazed window to front, radiator

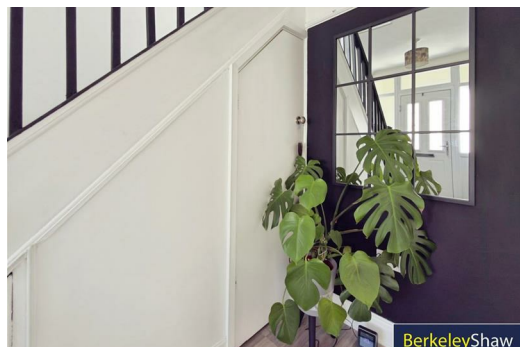
Bathroom

6'6" x 5'10" (2.0 x 1.80)

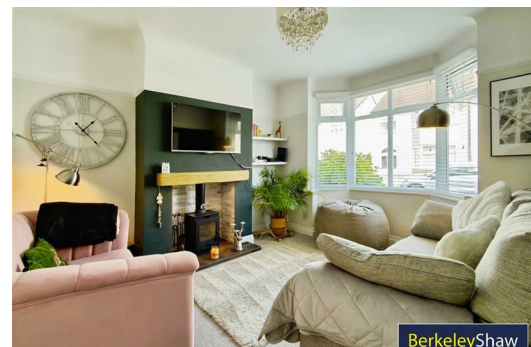
UPVC double glazed frosted window, panel bath with shower over and glass shower screen, low-level WC and pedestal wash hand basin, chrome ladder radiator, part tiled walls and laminate flooring



BerkeleyShaw



BerkeleyShaw



BerkeleyShaw



Berkeley Shaw Estate Agents Limited.
Company No. 0784754

Berkeley Shaw Real Estate Limited.
Company No. 05206927

