



BerkeleyShaw

1 Swifts Close, Bootle, L30 2RJ

Offers Over £180,000

****Extended Four-Bedroom Semi-Detached Family Home with Driveway, Gardens and Ground Floor En-Suite Bedroom****

This beautifully presented and significantly improved four-bedroom semi-detached home offers flexible and spacious accommodation, making it an ideal choice for growing families or those seeking multi-generational living.

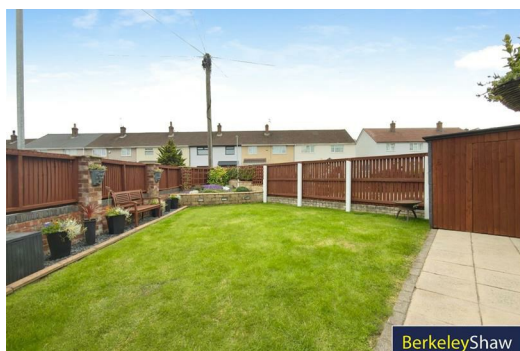
The property benefits from a garage conversion, creating a generous fourth bedroom complete with en-suite shower room, providing excellent independent living space for relatives, guests or older children. Further recent improvements include a new boiler and a refurbished family bathroom.

Upon entering, a bright and welcoming entrance porch leads through to the heart of the home. The impressive dual-aspect lounge enjoys an abundance of natural light, with patio doors at both ends creating a wonderful sense of space and seamless access to the gardens. This is a superb room for all the family to relax and spend time together.

The dining kitchen provides ample space for family meals and entertaining, with direct access to the rear garden. Outside, a decked patio area leads to a pergola beyond, creating an attractive outdoor entertaining space, enhanced by external lighting for year-round enjoyment.



BerkeleyShaw



BerkeleyShaw



BerkeleyShaw

Hall

Lounge

Kitchen Diner

Bedroom 4 (Ground Floor)

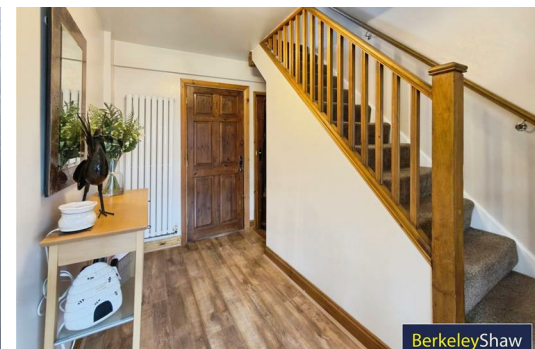
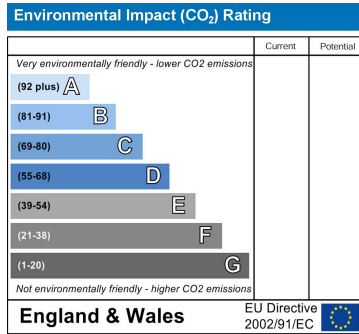
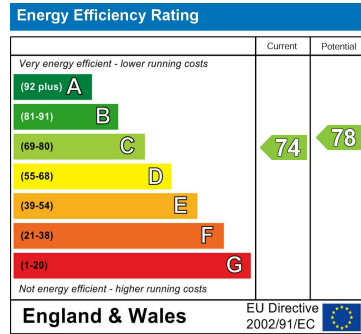
Ensuite Shower Room - Beds 4

Bedroom 1

Bedroom 2

Bedroom 3

Family Bathroom



Berkeley Shaw Estate Agents Limited.
Company No. 0784754

Berkeley Shaw Real Estate Limited.
Company No. 05206927

