



BerkeleyShaw
REAL ESTATE

28 Karonga Road, Liverpool, L10 9LW

£140,000

A three bedroom end of terrace property occupying a most favourable corner position within this popular and convenient residential area.

Priced to allow for some improvement works, this is an ideal opportunity for those wishing to modernise a much loved family home.

Features briefly include; entrance porch & hall, lounge, kitchen, ground floor shower room, first floor landing and three good size bedrooms. Outside there is driveway parking and generous gardens to the front, side & rear elevations.

Early Viewing Advised. No Chain Delay With This Sale.



BerkeleyShaw
REAL ESTATE



BerkeleyShaw
REAL ESTATE



BerkeleyShaw
REAL ESTATE

- Porch
- Hall
- Lounge
- Kitchen
- Shower Room
- First Floor Landing
- Bedroom One
- Bedroom Two
- Bedroom Three

Energy Efficiency Rating		
	Current	Potential
Very energy efficient - lower running costs		
(92 plus) A		
(81-91) B		
(69-80) C		
(55-68) D		
(39-54) E		
(21-38) F		
(1-20) G		
Not energy efficient - higher running costs		
England & Wales	EU Directive 2002/91/EC	

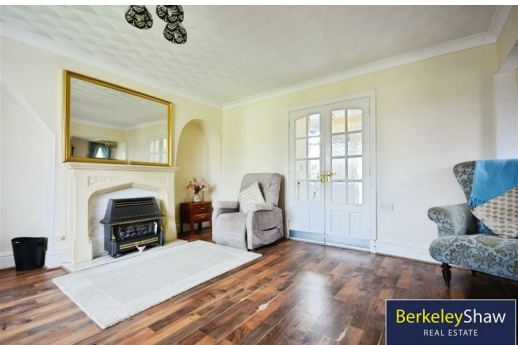
Environmental Impact (CO ₂) Rating		
	Current	Potential
Very environmentally friendly - lower CO ₂ emissions		
(92 plus) A		
(81-91) B		
(69-80) C		
(55-68) D		
(39-54) E		
(21-38) F		
(1-20) G		
Not environmentally friendly - higher CO ₂ emissions		
England & Wales	EU Directive 2002/91/EC	

GROUND FLOOR
379 sq.ft. (35.1 sq.m.) approx.

1ST FLOOR
370 sq.ft. (34.4 sq.m.) approx.



TOTAL FLOOR AREA: 749 sq.ft. (69.5 sq.m.) approx.
 Whilst every attempt has been made to ensure the accuracy of the figures contained here, measurements of floors, elevations, areas and any other space are approximate and no responsibility is taken for any errors, omissions or misstatements. This plan is for illustrative purposes only and should be used as a guide only. Any prospective purchaser should verify the accuracy of the figures and measurements shown here and not be bound by any guarantee. As to the quality of materials used herein.
 Made with Metropix 02020



Berkeley Shaw Estate Agents Limited.
 Company No. 0784754

Berkeley Shaw Real Estate Limited.
 Company No. 05206927

