



BerkeleyShaw

South Quay Wapping Quay, Liverpool, L3 4BW

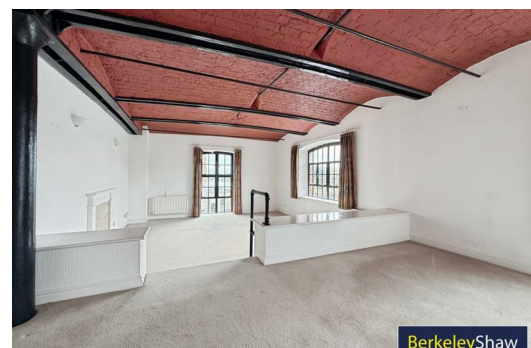
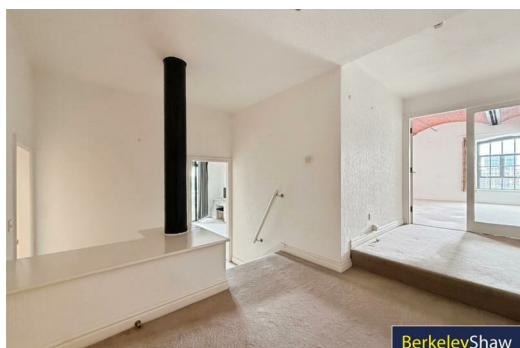
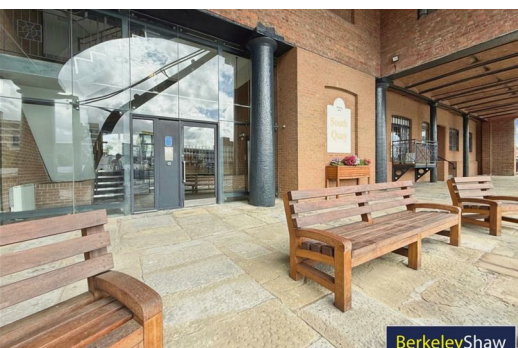
£1,500 PCM

This neutrally decorated two-bedroom flat is available **to let** in the desirable Wapping Quay area of Liverpool, close to the city centre and the historic waterfront. Set within an urban location with notable historical features and excellent walking and cycling routes along the docks, the property offers practical accommodation with modern comforts.

The flat comprises a separate reception room with large windows and waterfront views, together with a fireplace, creating a comfortable living space. The kitchen benefits from natural light and built-in pantries, complemented by an additional separate pantry and an abundance of storage space.

The master double bedroom includes an en-suite, built-in wardrobes and a balcony, providing private outdoor space with outlooks towards the waterfront. The second double bedroom also offers built-in wardrobes and a walk-in closet. There are two bathrooms: one with a free-standing bath, rain shower, built-in storage and heated towel rail, and a second shower room with rain shower and heated towel rail. The property further benefits from parking. EPC rating D. Council tax band E.

Located at South Quay in Wapping, residents are well placed for Liverpool's waterfront attractions, the Albert Dock, and the city centre's shops, cafés and restaurants. Local green spaces and the riverside paths offer accessible walking and cycling routes. Public transport links are strong, with James Street and Liverpool Central stations within easy reach, offering regular services to destinations including Chester, the Wirral and Southport, and connecting into Liverpool Lime Street for regional and national rail services.



Entrance Vestibule

Lounge

Lounge/Diner

Kitchen

Bedroom 1 (Master)

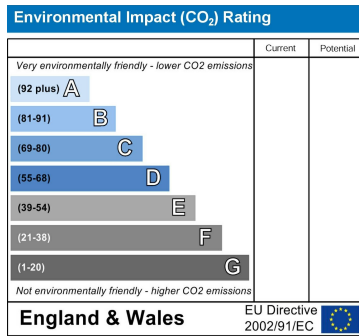
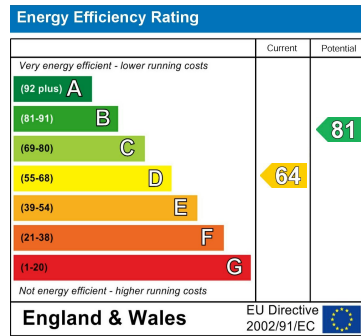
Bedroom 2

Study

Bathroom 1 (Main)

Bathroom 2 (En Suite)

Front Exterior/Waterfront



Berkeley Shaw Estate Agents Limited.
Company No. 0784754

Berkeley Shaw Real Estate Limited.
Company No. 05206927

